



Annual Research Report 2017



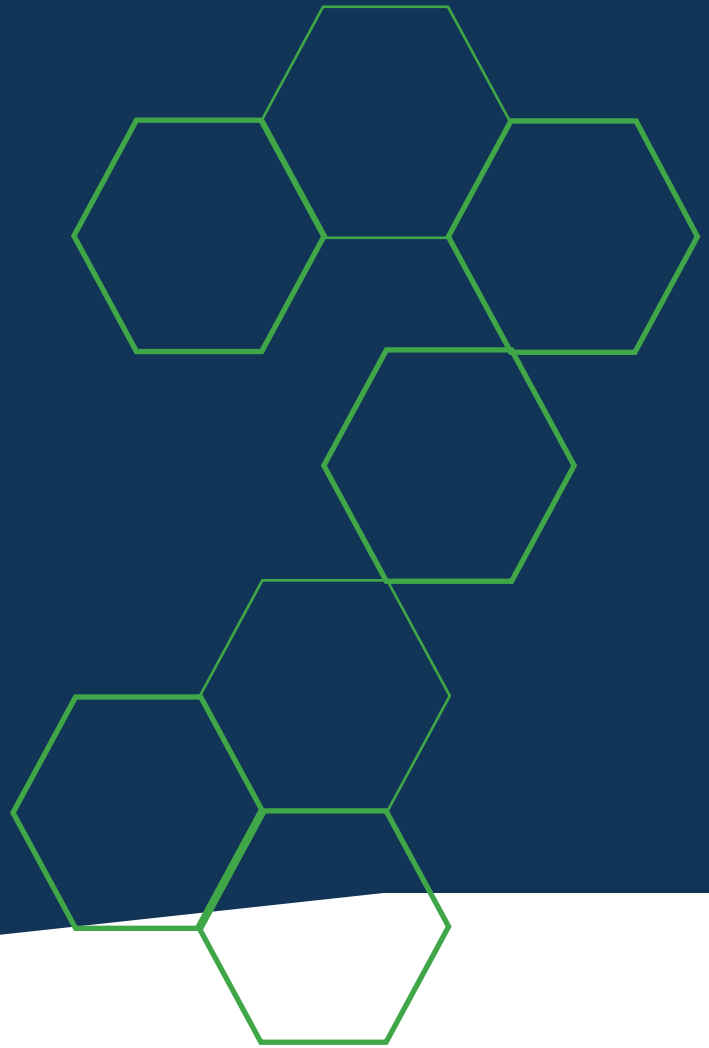


© State of Queensland
(Sunshine Coast Hospital and Health Service) 2018
<http://creativecommons.org/licenses/by/3.0/au/deed.en>

Table of contents

Foreword.....	4
Introduction	5
Research snapshot	6
Research day 2017	7
Research highlights.....	8
• Allied Health.....	8
• Cardiology.....	10
• Clinical research trials.....	12
• Hepatology.....	14
• Intensive Care Unit.....	16
• Mental Health and Addiction Health Services	18
• Renal	19
• Stroke and Rehabilitation.....	20
• Surgical	21
• Women’s and Families	22
Wishlist—Sunshine Coast Health Foundation	23
New projects 2017	24
Journal articles and abstracts.....	28
References	38

Foreword



2017 was a year of substantial change and gifts for research in Sunshine Coast Hospital and Health Service (SCHHS).

There were challenges for researchers but more importantly we saw the opening of Sunshine Coast Health Institute (SCHI) in January 2017, Sunshine Coast University Hospital (SCUH) in March 2017, and the September 2017 announcement of the 15 additional medical places for Griffith University's medical school which will commence in 2019.

As our collaborations with SCHI partners and other researchers develop and mature, our future path will change and new challenges and questions may arise. This report documents the work of our researchers in 2017 and will become a historical document, so that in years to come we may look back upon the path travelled.

While it is important to rise to the challenges facing us, it is also important to take some time to reflect. We celebrate more publications than ever before and ongoing grant success. Research has become integral to the delivery of

high quality health care. Our collaborations with supporters remain strong, foremost being with Wishlist (the Sunshine Coast Health Foundation). The Research Committee has been revitalised into a smaller Research Council supported by an operational group, and I thank these hard working members who assist in driving the research agenda.

Grace Hopper, ex-Rear Admiral for the US Navy said:

"The most dangerous phrase in the language is 'We've always done it that way'".

Our researchers are constantly challenging what we do and driving change.

We commend the SCHHS Research Report 2017 to you.

Associate Professor
Nicholas Gray
Director Renal Services
Chair, SCHHS Research
Council

Dr Margaret Way
Executive Director
Innovation, Quality,
Research and
Education, SCHHS



Introduction

Many years of planning and preparation culminated in the successful opening of Sunshine Coast University Hospital (SCUH) in March 2017, a new tertiary level healthcare facility expanding and complementing the other services within Sunshine Coast Hospital and Health Service (SCHHS).

The interim National Safety and Quality Health Service Standards Accreditation for SCUH was achieved shortly after. The health service achieved full accreditation in 2018. Researchers balanced the demands of transition and ongoing clinical service delivery while also completing research related site transition requirements of research. All of this while further increasing research.

As a health service with a tertiary level facility, the provision of advanced medical investigation and treatment is imperative. Research provides treatment options, improves management of disease and enables innovative ways of achieving outcomes and producing solutions to health problems. It provides a pathway for informing policy, developing guidelines and prescribing best practice ⁽¹⁾.

A key requirement of research is the translation of results into clinical practice. The act of researching in itself can also provide significant outcomes such as enhancing staff skills in communication, project management, collaboration, organising budgets, ethics applications, research protocol, literature reviews and presenting and publishing their work ⁽²⁾.

Research outcomes lift the profile of the health service in the public and health community and support growth of an organisation. A high profile maintains trust and acceptance of the organisation in the community and the professional sector.

This research report presents the research outputs for the calendar year 2017 and reinforces the SCHHS Research vision:

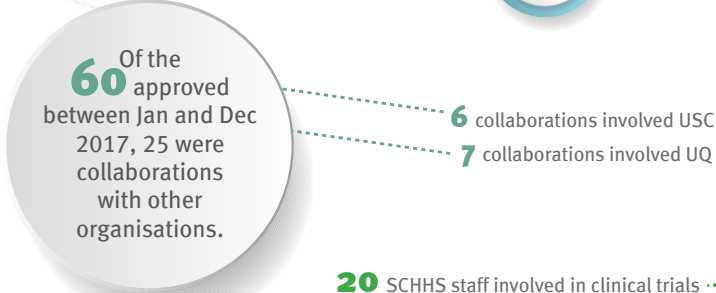
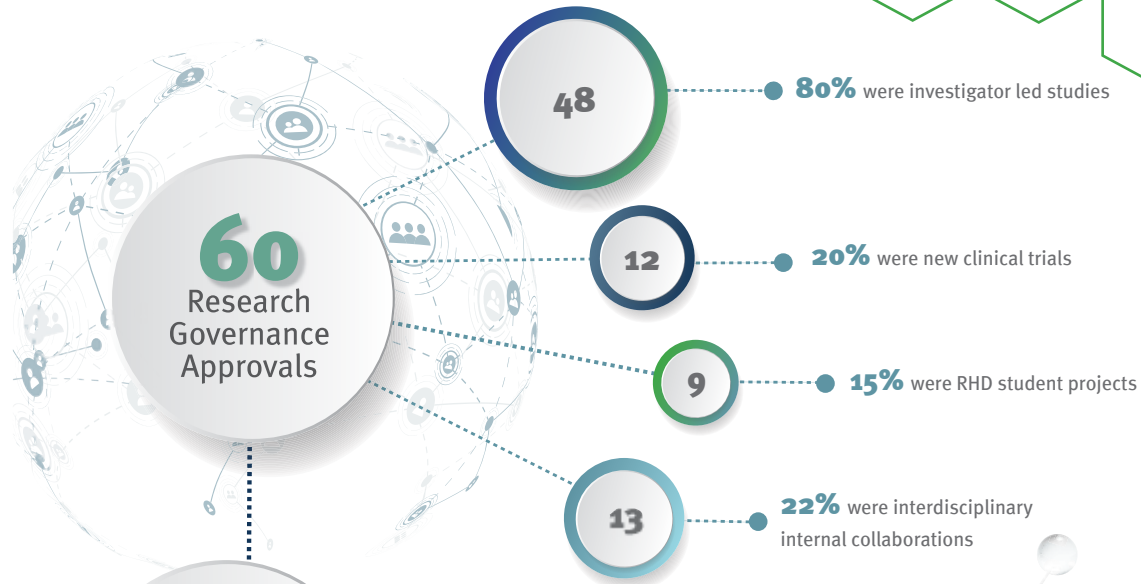
“The creation of an organisational culture that combines innovation and pursuit of knowledge into best practice patient care is critical to the development of a significant and internationally recognised research presence.”

Three essential elements of this vision are:

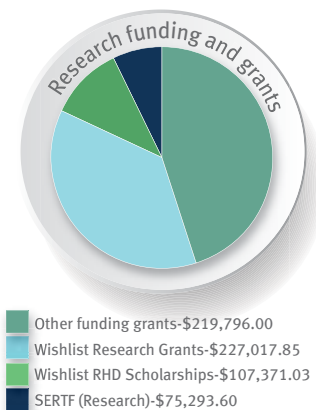
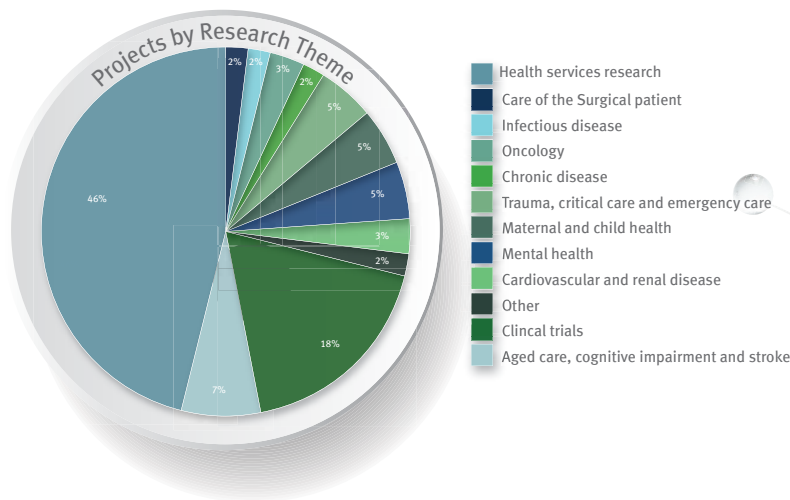
- Providing outstanding care
- Developing new knowledge, through research, to contribute to regional, national and international improvements in evidence based practice
- Mentoring and education of the next generations of staff that fosters local research capability. ⁽³⁾

Research snapshot

Data in this research snapshot relates to research projects that have received Research Governance Approval from January to December 2017 inclusive.



20 SCHHS staff involved in clinical trials
86 SCHHS staff involved in investigator-led studies



Research Day 2017



The annual SCHHS Research Day was celebrated on 15 November 2017.

2017 marked the first year of the event being held at the Sunshine Coast Health Institute (SCHI). About 270 people attended the day to witness SCHHS researchers showcasing their work. The day is central to developing healthcare in our region through research and innovation and is a way of supporting our staff in advancing healthcare.

This year, SCHHS was grateful to welcome keynote speaker Professor Emeritus Alan Mackay-Sim from the Griffith Institute for Drug Discovery, Australian of the Year 2017, and stem cell scientist. As a world leader in spinal cord injury research, Professor Mackay-Sim has led a Brisbane team in a world-first clinical trial in which the patient's own olfactory cells were transplanted into their injured spinal cord in the first stages of a therapy to treat human paraplegia. Professor Mackay-Sim's keynote address provided fascinating examples of his ground-breaking research.

Research Day was also an opportunity to award the recipients of the 2017 Wishlist Research Grants. Wishlist Foundation Chief Executive Officer, Lisa Rowe, awarded a total of \$105,876 to fund seven innovative research projects to be undertaken in the SCHHS, by health service staff.

The research grants supported projects that investigated a range of conditions and methods of care, including chronic kidney disease which affects hundreds of people living locally, a randomised trial on a specific therapy used to treat heart failure, the monitoring of invasive diseases in our vulnerable populations, and the barriers of caring for dying newborns close to or at home.

Building sustainable research capacity requires development of a strong research culture within clinical departments and the health service, effective research management, funding support, suitable research facilities and research collaborations. The annual SCHHS Research Day is a key event that showcases how staff translate these principles into action within the health service.

Allied Health

research highlights

Allied health established a research collaboration working party to draft a research plan for 2017-2022.

The plan outlines the professional direction and objectives for allied health research in Sunshine Coast Hospital and Health Service. The allied health plan for research documents the current landscape, challenges and goals to achieve increased research capability, and to expanding research capacity and outcomes.

The recent opening of Sunshine Coast University Hospital has led to allied health staff now working within a tertiary health care environment. A central component of a tertiary health care environment is the establishment of research practice and contribution to improve health care. The allied health research priorities are:

1. Growth of research activity by:
 - Making research accessible for clinicians through considering research methodologies which combine clinical practice and research activity. For example, encouraging observational studies and/or clinical activity audits to identify areas for improvement.
 - Undertaking a gap analysis in specialty areas regarding the use of evidence-based practice and clinical guidelines measuring key clinical indicators.
 - Development and enabling of allied health lead researchers in clinical specialty areas to facilitate allied health clinicians within their specialty area to undertake research.
2. Development of support and infrastructure specific for allied health through:
 - Communicating current health service resources and education for Allied Health staff to enable skill building, capacity building and culture development in implementing research e.g. build strong collaboration with Sunshine Coast Health Institute, Innovation, Quality, Research and Education (IQRE) group and external partners e.g. Griffith University and the University of the Sunshine Coast.
3. Development of a strong research culture within the allied health workforce by:
 - To support staff through education and mentoring activities to participate or complete research as per the requirements of their role description.
 - Allocating institutional allied health funding to support research within the Allied Health Professional Workforce Plan. Allocated funding will be utilised to support individual researchers to undertake research activities and generate research outputs within working hours.
 - Proposal for a research mentor position within the Allied Health Professional Workforce Plan.
 - To create a digital repository for allied health research, which allied health staff can access to know what past, current or future research is occurring in allied health.
 - To identify key contact persons within the Research Governance and Development Unit for the allied health workforce.

Research highlights:

Examining the management of gestational diabetes mellitus (GDM) in Queensland. Gestational diabetes affects more than 10% of pregnancies on the Sunshine Coast and this number has risen dramatically in recent years. In 2015, Queensland Health published the first clinical guideline for GDM in conjunction with the changes to diagnostic criteria. The risks of poorly controlled GDM include large-for-gestational age babies or macrosomia which can result in increased caesarean deliveries and birth trauma. However, when well-managed, women with GDM experience similar pregnancy outcomes to those without.

Dietitian, Nina Meloncelli has been undertaking a Health Services PhD, examining gestational diabetes management and translating the clinical guidelines into practice. Nina's research comprises of three separate but complimentary studies, each contributing new knowledge about how gestational diabetes is managed in Queensland and more broadly, Australia. These studies are:

1. Two surveys (one national and one specific to Queensland Health) targeted at the multidisciplinary team (MDT) and directors of gestational diabetes services to understand the currently management practices, models of care, attitudes and perceptions, staff resourcing and guideline implementation
2. An analysis of Queensland Perinatal Data for the year before (2014) and after (2016) the Queensland Clinical Guideline for GDM was published which included changes to diagnostic criteria
3. Evaluation of a model of care in the health service which aims to implement guideline recommendations, in particular, minimal schedule of dietitian appointments and the implementation of a low-risk model of care.

Progress-to-date includes the publication of survey results in the Australian and New Zealand Journal of Obstetrics and Gynaecology and a second manuscript currently under review. The survey showed that while screening and diagnosis is somewhat uniform, there is considerable variation to how gestational diabetes is managed nationally. The second survey across Queensland Health has highlighted that despite a 33 per cent increase in diagnosis of GDM since changes to the diagnostic criteria, only half the health service received minimal increases to staff resourcing. Less than 50 per cent of the services report full implementation of the clinical guideline and unsurprisingly, staff resourcing was overwhelmingly the most commonly reported barrier to guideline implementation.

A new model of care for GDM has been underway in the health

service since October 2017 and the data collection period for the evaluation is almost at its end. The primary outcomes of interest are pharmacotherapy use, total cost of antenatal care, adherence to dietetic schedule of appointments and clinician awareness and satisfaction. Developing the model of care involved collaboration with the entire GDM MDT and ongoing support from the Diabetes Centre. Nina is grateful for the support and enthusiasm demonstrated by the diabetes team which has made researching in this area both enjoyable and achievable.

The gestational diabetes research has been underpinned by an Australian Government Research Training Program Stipend, Wishlist Research by Higher Degree Scholarship and most recently, a Health Practitioners Research Scheme Grant. Nina will finalise data collection and analysis by early 2019 and plans to submit her PhD thesis by the end of next year. Once completed, Nina aims to take the model of care state-wide with the inclusion of dietitian credentialing for expanded scope of practice and provide telehealth support to remote and rural services.



Cardiology

research highlights



Research within the Cardiology Department continues to flourish at SCHHS.

Professor Tony Stanton established a significant research presence and likewise Professor Kim Greaves has continued to drive an innovative research agenda forward.

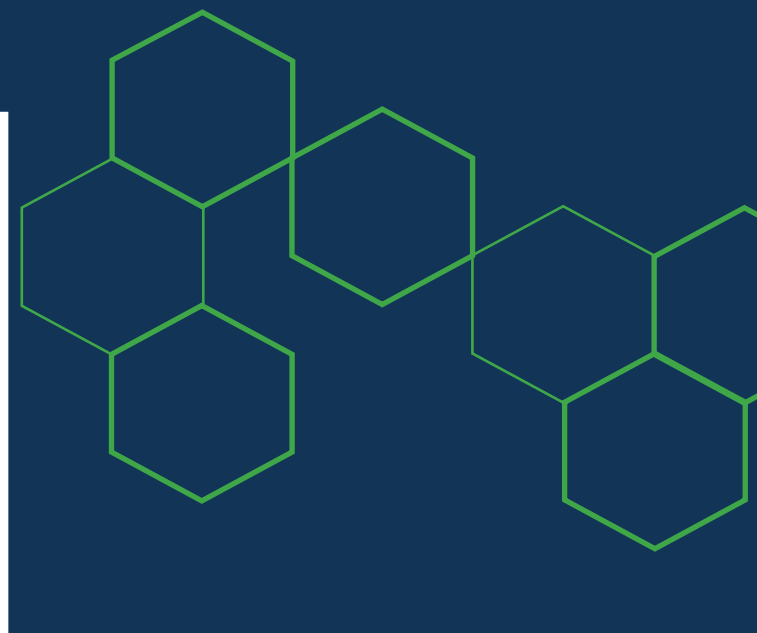
The department clinicians are driving a strong research culture amongst staff encouraging and supporting junior researchers through mentorship and guidance.

Professors Greaves and Stanton have acted as PhD supervisors for four students and supported many medical students and junior doctors with their research projects.

The department was awarded funding from two major grant sources to support projects:

- The Health Improvement Unit, Clinical Excellence Division, Queensland Health: \$500,000 (Lead CI). GP Data Linkage and ReDy Consent Projects; and the
- Australian Department of Health grant for Absolute Risk Assessment of Cardiovascular Disease for Aboriginal and Torres Strait Islander People: \$2.4M (CI)

and J Quah was awarded winner of the best poster at the prestigious Asia Pacific Congress Cardiology, Singapore, May 2017



Our plans for 2018 and beyond

The cardiology department will build its capacity for cardiovascular disease research within the SCHHS over the next few years in line with the strategic research themes and needs of our population. We intend to focus on the departments research strengths of microvascular function and primary prevention.

Recruiting and supporting more higher degree research students will continue to build our research culture and we are keen to explore opportunities to establish a program with Griffith University for medical students to undertake a PhD as part of their medical training. Another exciting initiative to be explored is the potential for a fast track PhD program to be optionalised into the cardiology advanced trainee training program.

We will continue to work on the innovative Data Linkage and ReDY consent pilot and contribute to the work of the

Department of State Development who are looking to identify future options to build on the work of the Data Linkage and ReDYwork.

We also have plans to assess the use of PENCs as a surveillance tool for ACVD risk and recall of high risk patients, using the results from our research and our work with policy makers (Heart Foundation, NCEPH) to increase ACVD risk scoring and treatment uptake by our population. We are exploring a collaboration with USC on cardiac rehabilitation which will provide a wealth of research opportunities.

2017 has been an outstanding year of research development for the cardiology department and we are excited to build and expand upon that progress as we move forward into delivery of tertiary level health services.

Clinical research trials

During 2017 clinical trials we continued to recruit patients for additional clinical trials while transitioning to the new hospital.

Moving sites was challenging, familiarization with the new environment, lots of new equipment plus the mandatory requirement to obtain Ethics Committee approval to amend contractual documentation meant that the trials coordinators were busy and fully occupied. The team under the leadership of Helen Rodgers, Nurse Manager for Clinical Research did a fantastic job, their enthusiasm and commitment unfaltering.

In August 2017 the new Clinical Research Unit opened on level 2 of SCUH. This visible demonstration of the SCHHS commitment to advancing clinical research provides a dedicated area with eight consultation rooms each with its own ensuite, comprehensive support facilities including procedure room, pantry and medication preparation room all located within a restricted access area. We look forward to increasing clinical research activity and seeing more patients in this dedicated area.

A significant first for SCUH was the acceptance of SCUH to participate in a phase 1 clinical trial in Hepatology. This was the first time the SCHHS had completed negotiations and preparations to participate in an early phase international study and was huge in terms of our research capability and profile. Since then Hepatology have embarked on further clinical trials and have plans to extend further over the next few years.

Medical disciplines leading the way in trials and research in 2017 were Stroke, Renal, Hepatology, Cardiology and Oncology. All of these units continue to provide our patients with greater options and hope for their patient journey and medical advances for care of others who follow.



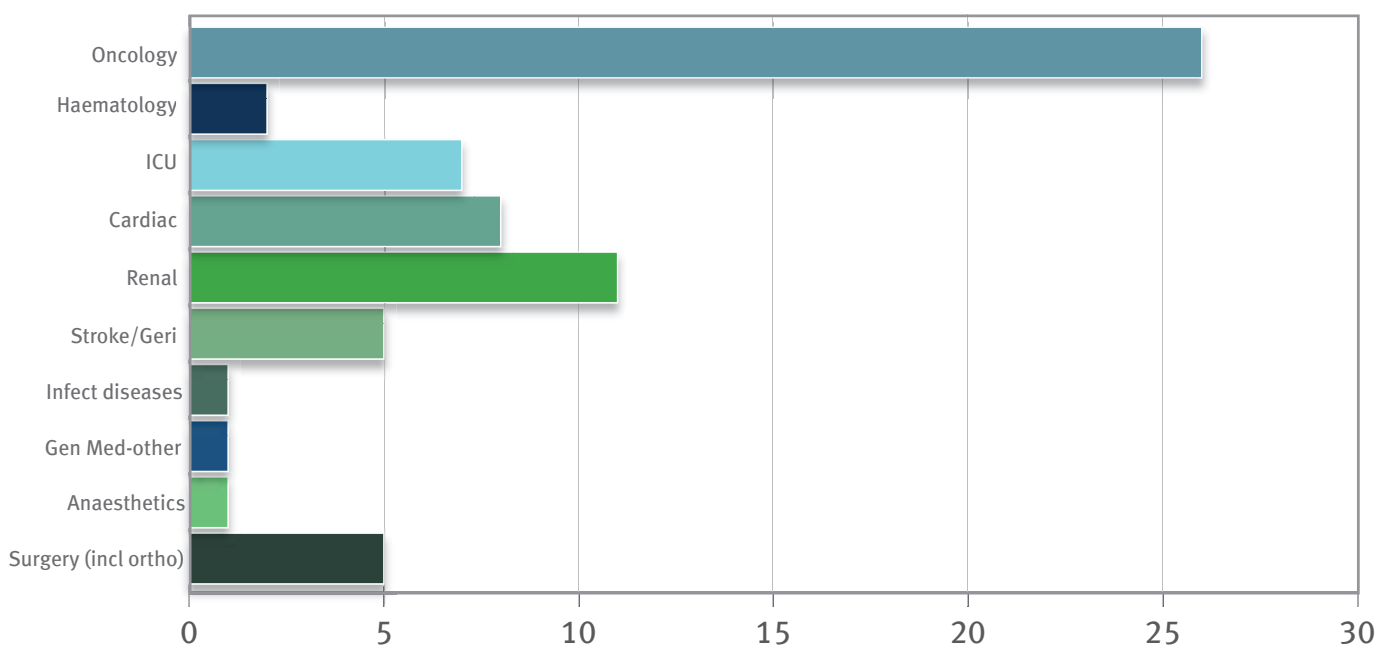


Figure 1: Number of Clinical Trials active during 2017

Hepatology research highlights



2017 was a busy year for the Hepatology Unit as we deliver a busy clinical service in addition to promoting and embedding research culture within the department.

The unit has been successful in two grant applications:

1. Evaluation of ultrathin unsedated endoscopy for variceal surveillance (NTFEP - \$250,000)
2. Effect of a high fat meal on vascular function in NAFLD (Inflame - \$5000)

We reported the work of the unit in national and international meetings such as the British society of gastroenterology meeting, Manchester, UK, International liver cancer association, Seoul and Australian Viral Hepatitis Elimination Conference, Cairns.

A number of collaborations have been established with local and national partners including the University of the Sunshine Coast, Queensland Institute for Medical Research (QIMR) and the Kirby Institute in New South Wales (NSW).



We have successfully opened and recruited into a clinical trial of Etrasimod in Primary Biliary cholangitis. This is an early phase proof of concept study and we were the 2nd institute in Australia to recruit.

Our Hepatology Partnership program for the treatment of Hepatitis C (funded by the Integrated Care Innovation Fund and Australian Centre for Health Services Innovation) continues to deliver excellent clinical outcomes and research data leading to numerous abstracts and one published manuscript with another under consideration.

Intensive Care Unit research highlights

2017 saw the continued growth and development of our intensive care research department.

After the transition to Sunshine Coast University Hospital (SCUH), we put the spotlight on critical care research by holding the Inaugural Critical Care Research Forum (QCCRF) at SCUH. This forum brought together world-class researchers and clinicians from intensive care units across the state to develop research which matters to Queensland and hosted some of the foremost critical care researchers in the world as guest speakers, including Prof Rinaldo Bellomo, Prof John Fraser, Prof Bala Venkatesh and Prof Jason Roberts.

Hosted at the Sunshine Coast Health Institute, more than 80 registered delegates attended including specialists, academic university researchers, research coordinators and allied health researchers. This was a remarkable team effort from our Intensive Care Unit (ICU) research unit and as result Dr John Moore is now leading a state-wide research network and we look forward to holding the event again in 2018.

Having secured a funding award of \$106,000, 2017 saw the commencement of Dr John Moore's All-SPICE Study. Project Managed by Lauren Murray across four ICU sites in Queensland and NSW, we enrolled 100 critically ill patients in 12 months. We have examined the bloodbourne markers of stress and hypothesise that the use of sedating medications confuses the normal coordination of a stress response. This may be a fundamental underlying cause for the abnormal haemodynamics and metabolic disturbances seen in multi-organ failure.

A/Prof Chris Anstey has continued the body of work for his PhD, enrolling patients and using the facilities in the SCHI laboratory performing citrate analysis for his ACCid-HF study in collaboration with Prof Fraser Russel (USC).

This study is unique in that it uses a simple, stable, reliable and valid method of quantifying citrate concentration in both the plasma and the ultrafiltrate. The method is based on a proprietary assay that has been successfully modified at USC to suit our purposes. If successful, the assay will be developed to permit real-time bedside use.



2017 also saw continued participation in National and International collaborative research with completed recruitment in the ADRENAL trial with 122 patients enrolled at our site. Alongside completion of ADRENAL GEPS, ETHICUS II, ART123, AMINO III, PHEEM-Q-ICU, continued recruitment in SPICE III and STARRR-AKI, and commenced recruitment in PPPIC, DIANA and PneumoINSPIRE.

Local investigator research continued to grow with seven nursing, registrar and consultant driven projects commenced, continued or completed in 2017.

For more information please request a copy of the SCICCR 2017 newsletter.

E: sciccr@health.qld.gov.au

Twitter: @lauren_sciccr @qccrn



Mental Health and Addiction Services research highlights

The focus of Mental Health and Addiction Services (MHAS) has been on establishing a governance structure to approve and monitor all MHAS research projects.

This included establishing a local MHAS research committee with membership from interdisciplinary stakeholders and, importantly, representation from consumers and carers. It is important to us to include the perspective of our consumers and carers to inform our research activity. Current research activities include many innovative and clinically relevant projects with oversight from this governance committee.

Examples of these projects are cited below, many of which include tertiary educational and research partners:

- The Queensland Mental Health Services Employment Specialist Initiative: Enhancing recovery and social inclusion through competitive employment
- Investigating the narrative abilities of typically developing adolescents, to support assessment and intervention within a mental health service.
- Understanding Emergency Department triage and Mental Health service delivery for consumers.
- Investigating the narrative abilities of adolescents who present to CYMHS with a primary anxiety disorder
- Identifying barriers to change: the lived experience worker as a valued member of the mental health team.
- The efficacy of sodium benzoate as an adjunctive treatment in early psychosis.
- An investigation of a collaborative interagency service model of an intensive day program for mothers with a perinatal mental illness and their infant children under 12 months of age.
- Can individuals currently residing in a Queensland Health Community Care Unit and diagnosed with a severe enduring mental illness improve their social functioning with the introduction of Social Cognition Interaction Training.
- The All of Us Study—Operational staff's experience of performing cardiopulmonary resuscitation in acute care settings.
- Sexual health and sexuality in people with major mental illness treated under a Forensic Order: A cross-sectional quantitative survey study (Phase 1).
- Sexual knowledge in people with a major mental illness treated under a Forensic Order: A cross-sectional quantitative survey method (Phase 2).
- Evaluating reflective practices for nursing staff in an acute care hospital setting.

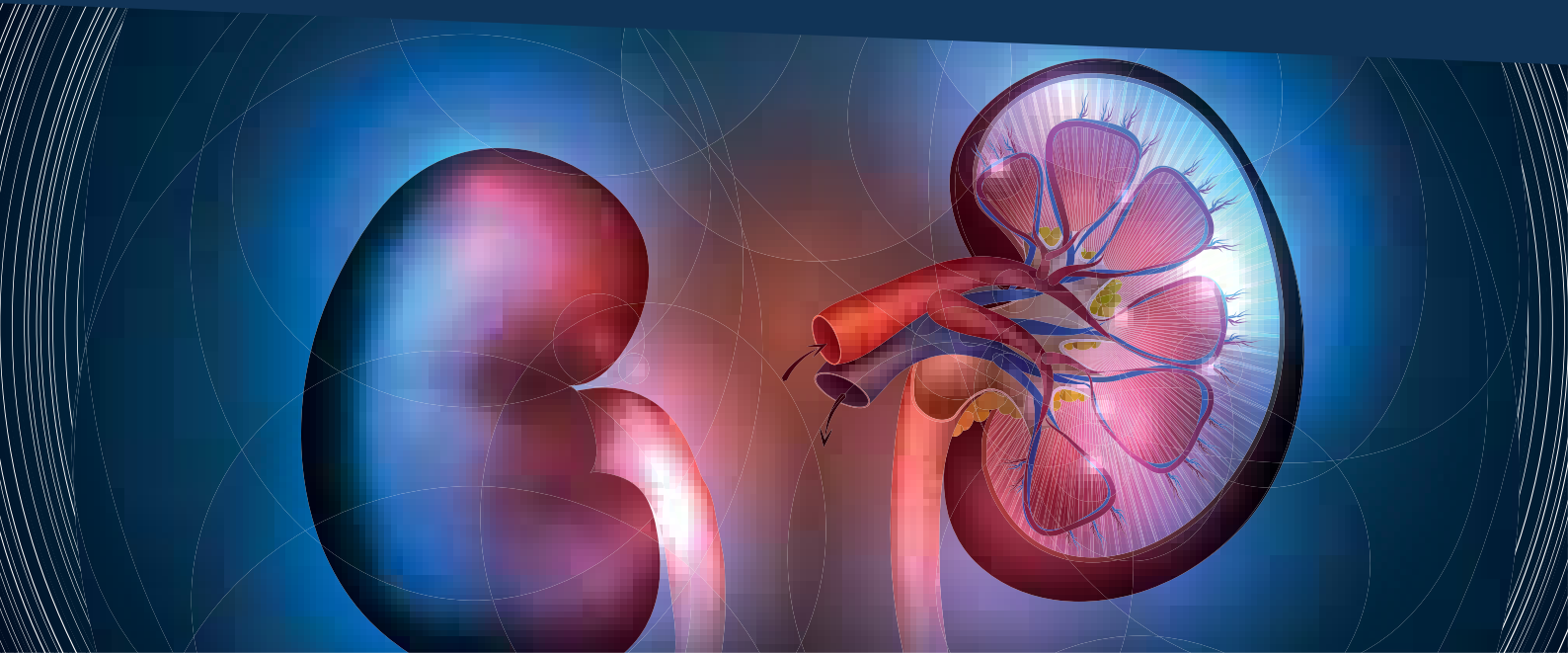
Another key focus of the MHAS research committee is to develop a MHAS research plan which aligns with the wider SCHHS strategic priorities. The MHAS focus being to continuously improve care and outcomes for consumers and carers. A key aspect of this being to develop and maintain a register of MHAS research projects including the outcome in order to support translation of our research projects into practice.

The committee provides a supportive environment and aims to foster a culture of evidence based practice by promoting and supporting MHAS staff to develop their skills. By identifying experienced research mentors the MHAS supports less experienced staff as they embark on their research journey. The MHAS supports trainees of the Australian and New Zealand College of Psychiatry in the conduct of their scholarly projects and staff in the conduct of research higher degrees.

The MHAS continue to identify exciting collaborative research opportunities, establishing Memorandum of Understanding between the health service and Florey Institute of Neuroscience and Mental Health and University of the Sunshine Coast. Inter-departmental research with the Department of Emergency Medicine has flourished to examine and understand the interface between emergency triage and MHAS service delivery.

It is anticipated the MHAS research capacity will continue to grow as we develop a more sophisticated approach to research with our staff and external partners. Exciting times are ahead as we identify and address staff research learning needs and our service develops in speciality areas. Areas such as eating disorders, adolescent mobile outreach services, perinatal and infant mental health, alongside our current service delivery to older persons, adults, children and adolescents across the whole of the Sunshine Coast region, provide endless opportunities for research to continuously improve consumer and carer outcomes and care.

Renal research highlights



Renal research activity continues to grow with some exciting developments in 2017.

Research expanded into allied health and nursing streams, including supervision of USC honours students from both occupational therapy and dietetics. These links, combined with our dietitian PhD candidate working on the Synergy 2 (SYNbiotics: easing renal failure by improving gut microbiology 2) study has generated further projects into 2018. Another highlight was one of our nursing staff presenting her reflections of research skills learned while participating in a research project.

Dr Rathika Krishnasamy continued her stellar performance in research with highlights including appointments as a clinical trialist and haemodialysis workgroup member for Australasian Kidney Trials Network, successful oversight and completion of the REMOVAL-HD (Effect of the TheraNova dialyser on albumin and uraemic solutes in haemodialysis) study, appointment as Australian Fellow for the RESOLVE (Randomised evaluation of sodium dialysate levels on vascular events) study, membership of the ANZDATA haemodialysis workgroup and Canadian exercise in kidney disease collaboration group, and finally appointment to the Australian Calciphylaxis Registry steering committee.

There were five published papers in 2017 with another three accepted for publication with some work presented by staff at the American Society of Nephrology Kidney Week.

A/Prof Gray continues work on the NHMRC funded REDUCTION (Reducing the burden of dialysis catheter complications: A National approach) study with close to 40 renal units across Australia participating. Next year looks better than ever with Dr Krishnasamy listed as chief investigator for two NHMRC and one MRFF project grants and commencing supervision of her first PhD candidate.

Finally, a thank you to our nurse research coordinators, Andrea Pollock, Gerald Hilder, and Elen Witness, who help make this all possible.

Stroke and rehabilitation research highlights

Stroke and rehabilitation research 2017 continued to develop a multidisciplinary research program with a focus on brain repair, early rehabilitation and recovery after stroke, and Parkinson's disease.

We have experienced ongoing growth of local stroke rehabilitation and recovery studies and intensified our collaborations with universities and research institutes across Australia. There has also been ongoing strong involvement in multi-centre clinical trials spanning acute stroke reperfusion, enhancement of stroke recovery, prevention of stroke, and Parkinson's disease. Some highlights:

- ❖ The team demonstrated the ability to run multi-site studies from SCHHS with the 'Building effective and equitable pathways to and through rehabilitation after stroke' (BEEPRS) study recruiting 504 participants across seven sites in Queensland. BEEPRS, led by Dr Rohan Grimley and managed by Ingrid Rosbergen is investigating where and how much rehabilitation stroke patients receive to identify gaps in the rehabilitation health service system, and pave the way for tailored interventions to improve access.
- ❖ Dr Grimley was successful in securing \$979,270.00 NHMRC funding as a chief investigator in the Partnership Project: Trial of Advanced CT Imaging and Combined Education Support for Drip and Ship (TACTICS). TACTICS will involve a stepped-wedge cluster trial of an enhanced model of care combining advanced computed tomography (CT) brain imaging, streamlined workflows, triage, transport and reperfusion pathways training to providing improved access for patients to reperfusion therapies in acute stroke. This study will commence soon across sites in Queensland and NSW. Dr Grimley published eight peer reviewed journal articles and presented 14 published abstracts in 2017.
- ❖ Ingrid Rosbergen (PhD candidate) led 'embedding an enriched environment in the acute stroke unit' to determine effect on patient activity levels. She published two peer-review papers and five abstracts in 2017 and became a Future Leader within the NHMRC Centre of Excellence 'Stroke Rehabilitation and Brain Recovery', increasing collaborations across The Florey Institute of Neuroscience and Mental Health, Newcastle's Hunter Medical Research Institute and other leading institutes.
- ❖ Samantha Robertson investigated 'impact of nutritional environmental enrichment strategies on intake and rates of malnutrition in an acute stroke unit' and presented study results at the International Stroke Conference in Queenstown, New Zealand.

In 2017 other SCHHS research-led studies started or underway include:

1. MONACT investigating the impact of hospital design on patient activity levels (Isaac Tonello).
2. CoAASt—using serial cognitive assessments to map early cognitive recovery after stroke (Alana Campbell, PhD candidate).
3. Increasing the amount of active practice—implementing evidence based interventions (Claire Stewart, PhD candidate).
4. Multi site person-centred goal setting project (Amanda Baker).
5. SCHHS site of multi-site SmartArm study after stroke (Sally Horsley).
6. TableTOP—Tablet Based Testing for Postoperative Cognitive Dysfunction in Home Visit Follow-up (Dr Emerald Setbo).
7. Identification and Outcomes of Transient Ischaemic Attack Mimics (Dr James Anderson).
8. Predictors of representation following management of seizure in the 4F study (Ryan Gee).
9. Non motor symptoms in Parkinson's disease (Dr Sanjay Gangadharan).

Surgery and anaesthetics research highlights

Anaesthetics and Perioperative Medicine

The Department of Anaesthetics and Perioperative Medicine has participated in multinational Clinical Network Trial Network studies, including METS, PADDI and EpiCCS. The anaesthetic department contributes to 'Webairs', an incident reporting system from the ANZ Tripartite Anaesthetic Data Committee.

The Anaesthetic Benchmarking System (ABS) – Obstetrics, a web-accessible data collection tool was rolled out across the state, and was supported by a \$250 000 grant from the Health Improvement Unit (HIU – QH). Dr Godsall completed the Epidural Stability Study (awaiting publication) and a quantitative research paper "How Midwives Manage Rapid Preloading of IV Fluid Prior to Low Dose Epidurals" which has been published in the Journal of Advanced Nursing. Both projects were supported by Wishlist Grants. Dr Nellie Dick also received a Wishlist grant for a study entitled "Just in Time Training."

Dr Rochelle Ryan is completing her PhD in the optimisation of surgical prophylaxis antibiotic dosing. She received the Gilbert Troup Prize at the Australian Society of Anaesthetists Congress in Perth for her oral presentation entitled "Does Cefazolin Prophylaxis During Elective Bariatric Surgery Achieve Therapeutic Antibiotic Concentrations in Plasma and Interstitial Fluid?"

Dr Richard Scolaro was the principal author of the national Australia New Zealand Anaesthetic Allergy Group Perioperative Anaphylaxis Investigation Guidelines. In addition, Dr Ewan Wright published "Exercising Patient-Centredness in Prehabilitation Programs in the European Journal of Surgical Oncology and Dr Stacey Swinkles published "Trainee Fatigue- Time for a Culture Change?" in Anaesthesia. Julie Osgood represented the SCHHS at the 'Pre-habilitation Symposium and CPET Workshop' (PSH Australia 2017) at Peter MacCallum Centre in December, presenting data from the SCHHS Cardio-pulmonary Testing (CPX) Service.

General Surgery

Over the past decade many SET trainees, while rotating through the SCHHS, have undertaken the research component toward gaining Fellowship of the Royal Australasian College of Surgeons (FRACS). Additionally, the department has been successful for the past 10 consecutive years with abstracts accepted for the RACS Annual Scientific Conference. At the 86th RACS Annual Scientific Congress, SCHHS presenters included: Scott Cooper, Russell Manley and Suzanne Ryan. Abstracts were also accepted for the Provincial Surgeons of Australia, and RACS Annual Joint Academic and Surgical Research Society Meetings.

The department has assisted many junior doctors to successfully obtain a place in the general surgery training program and to complete the research component of Honours and post-graduate

studies. During 2017, Lyndon Nofz completed his Master of Surgical Science studies through Edinburgh University, co-supervised by Sandy Grieve.

The department of General Surgery contributes to the Bi-National Colorectal Cancer Audit (BCCA), the Spleen Australia Registry and the Queensland Audit of Surgical Mortality (QASM). It is anticipated that in 2018, the SCHHS Trauma Service will contribute to the Australian Trauma Registry (ATR).

Orthopaedic Surgery

The Department of Orthopaedics undertook several clinical studies during 2017, including the SOFIE, CROSSFIRE, STEALTH, DOAC and 'Surf related spinal injuries' research. Gillian Puckeridge advanced her PhD studies through the generosity of a 2016 Wishlist RhD scholarship, and spent 0.5 FTE undertaking research during 2017. The department contributes to the Australian and New Zealand Hip Fracture Registry (ANZHFR).

Persistent Pain Management Service

Our Persistent Pain Management Service has been the recipient of a grant for \$187,708 from Clinical Excellence Division to host Queensland-wide implementation and evaluation of 'Reboot Online', a digital health intervention developed by the Clinical Research Unit for Anxiety and Depression (CRUfAD) and the Department of Pain Medicine, St Vincent's Hospital Sydney. Reboot is a non-invasive treatment adjunct, education and self-management tool in one, offering patients and clinicians a non-pharmacological pain management option.

ePPOC (Electronic Persistent Pain Outcomes Collaboration)

Sunshine Coast Persistent Pain Management Service joined a national, ongoing collection of persistent pain outcomes data, based at University of Wollongong. Information gathered using a standard set of data items and assessment tools by specialist pain services throughout Australia and New Zealand has been used to develop a national benchmarking system for the pain sector, leading to better outcomes and best practice interventions for patients in chronic pain. The information also enables development of a coordinated approach to research into the management of pain in Australasia.

Vascular Surgery

The Department of Vascular Surgery (Jill O'Donnell, Rebecca Magee and Pankaj Jha) continued their productive collaboration with the VasoActive Research Group at USC (five studies). An additional local study led by Pankaj Jha continued investigation into the role of thermometry in peripheral vascular disease. The vascular surgery department anticipate new collaborations with the Queensland Cardio-Vascular Research Network in 2018.

Women's and Families research highlights

In 2017, research capability and outputs have continued to grow within Women's and Families Service group.

Several research projects were completed and published and a number of new local investigator led studies commenced. The following studies commenced or continued in 2017:

Maternity Services:

- Enabling Safe and Close Care in Postnatal Environments [ESCCaPE trial]
- Prophylactic intrapartum epidural intravenous fluid pre-loading: a description of current practice and associated outcomes
- Has team training in obstetric emergency resulted in better outcomes? (PROMPT study)
- Identifying the risk: a prospective cohort study examining postpartum haemorrhage in a regional Australian health service
- YES—Yoga ESpecially for Mums by Midwives: A pilot research study incorporating pregnancy yoga and childbirth education
- Facilitation of collaboration, capacity and change within the context of re-designing maternity services: an action research study.

Neonatal Services:

The neonatal services have continued to participate in multi-centre trials, especially in the areas of neuro-development and early intervention.

- Harnessing neuroplasticity to improve motor performance in infants with cerebral palsy—a pragmatic randomised controlled trial
- Magnesium sulphate at 30 to 34 weeks gestational age: Neuroprotection Trial—Multicentre RCT trial around Neuroprotection.
- National scoping review of admission criteria to the neonatal nursery
- Early Prediction of normal and mild neurodevelopmental outcomes for prioritisation of service delivery of very preterm, very low birthweight premature infants
- Randomised trial of rehabilitation very early in congenital hemiplegia.

Paediatric Services:

Investigator-led studies within paediatrics also grew, with two clinical nurses and two occupational therapists undertaking higher degrees by research:

- Assessment of a paediatric fluid guideline, and fluid prescribing education program: study protocol
- Health for our most vulnerable: innovation to enhance the health care of children in Out of Home Care
- Autonomous nurse led weaning of high flow nasal cannula oxygen in infants with bronchiolitis: a mixed methods inquiry (Michelle Elks, PhD candidate)
- Protective risk factors for sudden unexpected death in infancy (Roni Cole, PhD candidate)
- Allied health AHP role in paediatric OPD services (Julie Creen PhD candidate)
- Does a group parent information workshop impact on parental sense of competence and child quality of life as compared to individual hospital clinic consultation (Di Collis, MSc candidate)

Most projects within the service group have had a strong inter-professional focus, and moving forward we are keen to invest in translational research and build our collaborative partnerships with USC and Griffith University. We are thankful for the continued financial support provided by Wishlist which funds many of our studies and we are looking to seek larger strategic funding for many seed funded projects in the future.

We are also pleased that the numbers of staff undertaking higher-degrees by research has continued to increase with paediatric nursing staff (2), midwives (5), allied health practitioners (4) and obstetricians (1) currently enrolled in PhD or MSc (research) degrees. This will dramatically enhance the capability of the Service Group to undertake both investigator-led and translational research within the unit and contribute to our ongoing culture of a research focussed service group.

Staff published a number of peer-reviewed journal articles, in areas such as Sudden Unexpected Death prevention, postpartum haemorrhage and innovative models of care.





Wishlist

Sunshine Coast Health Foundation

Wishlist has directed more than \$1.5 million towards local research projects to support Sunshine Coast Hospital and Health Service (SCHHS) over the past six years. The total amount Wishlist has invested in Research Project funding for research projects led by SCHHS Principal Investigators in 2017, was \$105,876.

This was distributed across three grant categories; Novice \$15,000; Early Career \$30,000 and Experienced researchers \$60,876. Wishlist also supports SCHHS staff with scholarships for education purposes and to attend conferences to present their research outcomes.

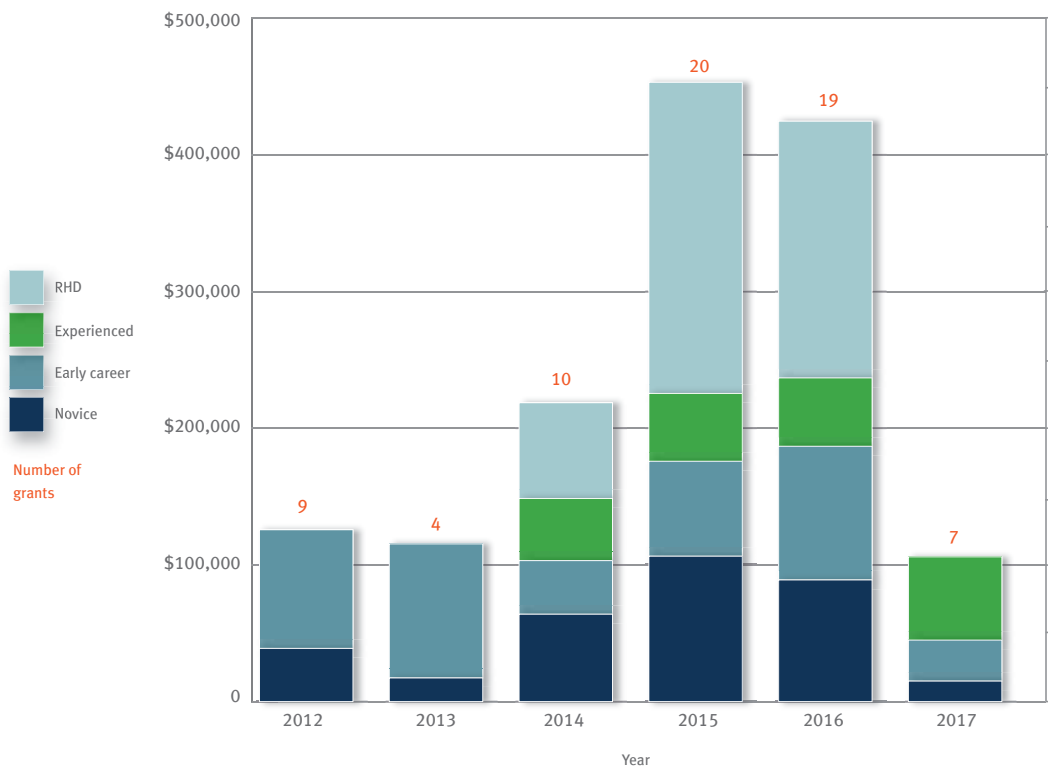
In 2017 Wishlist actively engaged with corporate and community supporters to fundraise for research, something previously not attempted by the foundation, and with truly impressive results. Hundreds of locals

invested in these grants and are excited about the potential outcomes of the 2017 Wishlist Research Grant Round.

As the region’s local hospital foundation, it is Wishlist’s intention to grow their research investment in the future. Wishlist believes strongly that it is part of their role to help foster and develop the research culture of Sunshine Coast Hospital and Health Service. They plan to continue that commitment following a review of their annual research investment strategy.

Visit <https://www.wishlist.org.au/> for more information.

Figure 2: Wishlist Research Grants to SCHHS Staff with Value per Category 2012-2017



New projects for 2017

SSA Approval Date	Short Title	Project Title	SCHHS Investigators
15/1/17	Breast Cancer & Primary Endocrine Therapy	Disease control and quality of life in women with breast cancer treated with primary endocrine therapy	Lyndon Nofz Sandy Grieve
1/2/17	PHAEDRA	A Phase II trial of Durvalumab in Advanced Endometrial Cancer	Mary Azer Allesandra Francesconi
7/2/17	DuQUA	Deepening our Understanding of Quality in Australia	Piotr Swiekowski
8/2/17	Restore Brain	Randomized Efficacy and Safety Trial with Oral S 44819 after Recent ischemic cerebral Event International, multi-centre, randomized, double-blind placebo-controlled phase II study	Rohan Grimley Quentes de Vries
15/2/17	CSIRO Patient Flow	Emergency Department Patient Admissions Prediction Tool	Justin Boyle— External
23/2/17	ACP Chronology	An Analysis of the chronology of Advance Care Planning in relation to a Rapid Response Team call event	Wendy Pearse John Endacott Prem Ram Suzanne Robson Louise Welch Clodagh Barwise-Smith
23/2/17	CAUGHT-CAD	Coronary Artery Calcium Score: Use to Guide Management of Hereditary Coronary Artery Disease	Tony Stanton
23/2/17	REDUCTION	Reducing the burden of dialysis Catheter Complications: A National approach	Nicholas Gray Rathika Krishnasamy
3/3/17	REMOVAL-HD	A single arm, non-randomised device trial to assess the effect of the Theranova Dialyser on albumin and uraemic solutes in patients with Stage V chronic kidney disease requiring haemodialysis	Rathika Krishnasamy Nicholas Grah Peter Hollett Kumar Mahadevan Euan Noble
3/3/17	Pumps in Pregnancy (PIP)	Comparison of Sensor Augmented Insulin Pump (with Smartguard technology) with Non Augmented Pump Therapy and Multiple daily injections on Maternal and Neonatal Outcomes in Pregnancy in Women with Diabetes – a case control study	Sophie Poulter
11/3/17	NAT	Investigating the narrative abilities of adolescents who present to CYMHS with a primary anxiety disorder	Adele Wallis
11/3/17	PPPIC	Patient and population preferences for intensive care: Integrating the person into decisions around care	John Moore
30/3/17	Identifying Barriers	Identifying barriers to change: the lived experience worker as a valued member of the mental health team	Louise Byrne— External
30/3/17	Lifestyle Intervention Evaluation	Lifestyle Intervention Program evaluation and follow up	Melissa Kruger
1/5/17	CADENCE-BZ	The efficacy of sodium benzoate as an adjunctive treatment in early psychosis	John McGrath Chris Lilley Krystal Dixon
1/5/17	RRT Calls	Outcomes of rapid response team calls in patients with documented treatment limitations - Is our management providing benefit or causing harm?	Victoria Campbell Chris Anstey
2/5/17	Donor Family Study (Wave 2, 3 and 4)	National study of family experiences of organ and tissue donation	Chris Anstey Danielle Upson

New projects for 2017

SSA Approval Date	Short Title	Project Title	SCHHS Investigators
8/5/17	CRT-OPT	A randomized trial of benefit and cost-effectiveness of Cardiac Resynchronization Therapy (CRT) optimization in heart failure.	Tony Stanton
8/5/17		Building capacity for end of life care outside specialist palliative care settings	John Endacott Wendy Pearse Sarah Goodman Florin Oprescu Elizabeth Statham
8/5/17	Gestational diabetes management	Examining the management of gestational diabetes mellitus	Nina Melonclli Susan de Jersey Adrian Barnett
8/5/17	The Utility of MRI in Diagnosing Acute Appendicitis During Pregnancy	The Utility of Magnetic Resonance Imaging in the Diagnosis of Acute Appendicitis During Pregnancy	Beau Mulder
8/5/17	Synergy II	SYNbiotics: Easing Renal failure by improving Gut microbiology II	Tony Stanton Rathika Krishnasamy Nicholas Gray Peter Hollett Kumar Mahadevan Euan Noble Victoria Campbell
8/5/17	Shift Work Study	Is there a link between clinical errors and emergency nursing shift patterns?	Kym Roberts Jessica Riordan Sarah Cochrane Ogilvie Thom Julia Hocking Tammy Doyle
31/5/17	ADVOCATE	A Randomized, Double-Blind, Placebo-Controlled, Phase 3 Study to Evaluate the Safety and Efficacy of CCX168 (Avacopan) in Patients with Anti-Neutrophil Cytoplasmic Antibody (ANCA0-Associated Vasculitis Treated Concomitantly with Rituximab or Cyclophosphamide/Azathioprine	Euon Noble Nicholas Gray Peter Holett Rathika Krishnasamy Kumar Mahadevan Victoria Campbell Jane Waugh
9/6/17	CANSTEM 303	A Phase III Study of BBI-608 in combination with 5-Fluorouracil, Leucovorin, Irinotecan (FOLFIRI) in Adult Patients with Previously Treated Metastatic Colorectal Cancer (CRC)	Alessandra Francesconi
14/6/17	Pneumo Inspire	International, multi centre, prospective, observational, cohort study of nosocomial pneumonia in intensive care	Michael Putt Mark Landy
14/6/17	EpiCCs	Epidemiology of Critical Care provision after Surgery - EpiCCS-Australasia	Joel Matthews
19/6/17	CVD	Total Cardiovascular Disease Risk (CVD) Assessments: A Survey on Screening in General Practice	Anita Smith
19/6/17	REACH	Randomised trial of Rehabilitation very EARly in Congenital Hemiplegia	Roslyn Boyd Rebecca Caesar
29/6/17	Epidemiology of Queensland parechovirus infections	Parechovirus infections in Queensland children: epidemiology, strain diversity, management and outcomes 2010 - 2018	Claudia O'Rourke

New projects for 2017

SSA Approval Date	Short Title	Project Title	SCHHS Investigators
20/7/17	GUPPIE Study	Aspirate Study – using gastric ultrasound to assess gastric residual volume and aspiration risk prior to extubation	Stephen O'Donoghue
20/7/17	Melanoma and Vitamin D	Is vitamin D status at time of melanoma diagnosis associated with stage of tumour	Leith Banney
29/7/17		Assessment of the effectiveness of clinical notes, from the clinician's perspective	Stella Rowlands Steven Coverdale Amina Tariq Sue Walker Maryann Wood
29/7/17	Attitudes & Perceptions of acupuncture / acupressure in Perioperative Care	Australian doctors and nurses' attitudes and perceptions of acupuncture and acupressure practice in perioperative care - A National Survey	Morne Terblanche
29/7/17	ACCidHF	Assessment of the Concentration of Citrate during Haemofiltration	Chris Anstey John Moore Victoria Campbell Lauren Murray
29/7/17	Blunt Trauma Triangle	Blunt Trauma Triangle	Nicolas Copertino David Grieve
29/7/17	Junior doctors and work-family balance	Junior doctors and work-family balance	Ilanthe Mills
29/7/17	DAEOP Study	DOAC; Assessment for Emergency Orthopaedic Surgery	Gillian Puckeridge Morne Terblanche James Tunggal Tawona Dhlakama Mostyn Yong
4/8/17	Training needs for ACP	A survey of training needs for health professionals to embed Advance Care Planning in clinical areas	Wendy Pearse John Endacott Prem Ram Suzanne Robinson Louise Welch Clodagh Barwise-Smith
14/8/17	BEEPRS-AQE	Building efficient and equitable pathways to and through rehabilitation in stroke: A qualitative exploration	Rohan Grimley Ingrid Rosbergen
14/8/17	Bortezomib in MM evaluation	Evaluation of bortezomib in Queensland public hospitals for the treatment of multiple myeloma	Helen Weston Ross Tomlinson
28/8/17	ESCCaPE Trial	Enabling Safe and Close Care in Postnatal Environments: A Pilot	Lauren Kearney Cheryl Rutherford Kendall George
30/8/17	NIVORAD	A randomised phase 2 trial of nivolumab and stereotactic ablative body radiotherapy in advanced non-small cell lung cancer progressing after first or second line chemotherapy	Jeremy Long Peter Manders
30/8/17	EXERTION	EXERTION: the EXERcise stress Test colaboratIOn	Tony Stanton
1/9/17	Diet quality & eating behaviours of CCU residents	Diet quality and eating behaviours of severely mentally ill patients residing in community care units	Ebony Verdouw Carla Van Heerden
29/9/17	Propofol on Trial for headaches in the Emergency Department Setting	A proof of concept study assessing the safety and efficacy of sub-anaesthetic dosing of intravenous propofol for the treatment of refractory migraine-like headaches in the emergency department	Ogilvie Thom Julia Hocking

New projects for 2017

SSA Approval Date	Short Title	Project Title	SCHHS Investigators
5/10/17	Infective endocarditis in the Sunshine Coast Hospital and Health Service	Infective endocarditis in a hospital without Cardiac surgical facility - retrospective and prospective review over a 10 year period	Shradha Subedi Kim Greaves David Sowden
16/10/17	PADDI Trial	The Perioperative Administration of Dexamethasone and Infection	Nicola Beauchamp Guy Godsall Rochelle Ryan
25/10/17	JiT	Just-in-time-training (JiT) to improve proficiency and confidence in anaesthetists when performing nasotracheal intubation. A randomised controlled pilot study	Nellie Dick
6/11/17	SAMSA Project	Systems Approach to Medication Safety: modelling medication management during normal work activities (SAMSA)	Natassia Goode Piotr Swierkowski Carol Trevor Rohan Grimley Frank Le Bacq Mauritius Du Toit
20/11/17	SPIRIT	A Phase 2a, Randomised, Double-Blind, Placebo-Controlled 42-Day Treatment Study to Evaluate the Effect of DNS-3379 on Upper Extremity Motor Function Following Ischemic Stroke	Rohan Grimley Quentes de Vries
6/12/17	Evaluation of SOC	Compilation and evaluation of statement of choices documents	Louise Welch
7/12/17	NASH	747-117: A Phase 1, Double-Blind, Randomized, Placebo-Controlled Study to Evaluate Safety, Pharmacokinetics, and Pharmacodynamics of Obeticholic Acid in Subjects with Nonalcoholic Steatohepatitis with Fibrosis (NASH)	James O'Beirne Jonathan Mitchell
14/12/17	Together in Mind	An investigation of a collaborative interagency service model of an intensive day program for mothers with a perinatal mental illness and their infant children under 12 months of age	Therese De Dassel
14/12/17	TEXAIS	A multicentre, randomised controlled Trial of Exenatide versus standard care in Acute Ischemic Stroke (TEXAIS)	Rohan Grimley Quentes de Vries
19/12/17	Hep B Vaccine Correlates	Identification of factors influencing Hepatitis B Vaccine Hesitancy at birth	Maureen Tan Tom Yap
19/12/17	PRAN-16-52	A phase III, double-blind, placebo-controlled, multicentre, randomized study of pracinostat in combination with azacitidine in patients 18 years with newly diagnosed acute myeloid leukemia unfit for standard induction chemotherapy (PRAN-16-52)	Anthony Powell Helen Weston
19/12/17	AU support & N/MUM clinical leadership	The impact of administrative support on clinical leadership of Nurse Unit Managers / Midwife Unit Managers: A multi-method study	May El Haddad Amy Holmes Lorraine Thompson Graham Wilkinson Annette Faithful-Byrne
19/12/17	SCIT Trial at CCU	Can individuals currently residing in a Queensland Health Community Care Unit (CCU) and diagnosed with a severe enduring mental illness (SEMI) improve their social functioning with the introduction of Social Cognition Interaction Training (SCIT)	Michael Bradburn - External

Journal articles and abstracts

1. Anderson, J. and R. Grimley, Characteristics and outcomes of TIA mimics. *International Journal of Stroke*, 2017. 12: p. 45-46.
2. Andrew, N., M. Kilkenny, V. Sundararajan, J. Kim, A. Thrift, T. Johnston, R. Grimley, and D. Cadilhac, Changes in hospital usage in the first year following acute stroke. *Eur Stroke J*, 2017. 2(1S).
3. Anstey, C., Measurement of Pre- or Post-Filter-Ionised Calcium Concentration during Continuous Veno-Venous Haemofiltration. *Blood Purification*, 2017. 43(1-3): p. 123-124.
4. Baird, T., R. Theal, S. Gleeson, S. McLeay, D. Law, and R. O'Sullivan, Detailed polysomnography in Australian vietnam veterans with and without post traumatic stress disorder. *Journal of Sleep Research*, 2017. 26: p. 23.
5. Beaton, T.J., R. Krishnasamy, N.D. Toussaint, R.K. Phoon, and N.A. Gray, Nephrology training in Australia and New Zealand: A survey of outcomes and adequacy. *Nephrology*, 2017. 22(1): p. 35-42.
6. Beer, J.D., M. Schaer, K. Latendresse, S. Raniga, B.K. Moor, and M.A. Zumstein, BiPOD arthroscopic acromioclavicular repair restores bidirectional stability. *Orthopedics*, 2017. 40(1): p. e35-e43.
7. Bladin, C., K. Bagot, J. Kim, M. Vu, G. Cadigan, H. Castley, M. Evans, R. Grimley, M. Jude, J. Jannes, T. Kleinig, C. Levi, S. Waters, A. Wesseldine, S. McGowan, S. Stirling, and D. Cadilhac, Working towards "no stroke untreated": Planning for the Australian Telestroke Network. *International Journal of Stroke*, 2017. 12(3): p. 42.
8. Body, R., E. Carlton, M. Sperrin, P.S. Lewis, G. Burrows, S. Carley, G. McDowell, I. Buchan, K. Greaves, and K. Mackway-Jones, Troponin-only Manchester Acute Coronary Syndromes (T-MACS) decision aid: Single biomarker re-derivation and external validation in three cohorts. *Emergency Medicine Journal*, 2017. 34(6): p. 349-356.
9. Bradford, N., R. Henney, B. Greenslade, R. Orford, R. Edwards, and J. Roach, Education needs of health professionals caring for adolescents and young adults with cancer. *Asia-Pacific Journal of Clinical Oncology*, 2017. 13: p. 64-65.
10. Broom, A. and J. Broom, Fear, duty and the moralities of care: The Ebola 2014 threat. *Journal of Sociology*, 2017. 53(1): p. 201-216.
11. Broom, A., J. Broom, E. Kirby, A. Gibson, and M. Davis, Antibiotic optimisation in 'the bush': Local know-how and core-periphery relations. *Health & Place*, 2017. 48: p. 56-62.
12. Broom, A., J. Broom, E. Kirby, and G. Scambler, Nurses as antibiotic brokers: Institutionalized praxis in the hospital. *Qualitative Health Research*, 2017. 27(13): p. 1924-1935.
13. Broom, A., E. Kirby, A.F. Gibson, J.J. Post, and J. Broom, Myth, Manners, and Medical Ritual: Defensive Medicine and the Fetish of Antibiotics. *Qualitative Health Research*, 2017. 27(13): p. 1994-2005.
14. Broom, J., A. Broom, and V. Bowden, Ebola outbreak preparedness planning: a qualitative study of clinicians' experiences. *Public Health*, 2017. 143: p. 103-108.
15. Broom, J., A. Broom, E. Kirby, A.F. Gibson, and J.J. Post, Individual care versus broader public health: A qualitative study of hospital doctors' antibiotic decisions. *Infection, Disease and Health*, 2017. 22(3): p. 97-104.
16. Broom, J., A. Broom, E. Kirby, A.F. Gibson, and J.J. Post, How do hospital respiratory clinicians perceive antimicrobial stewardship (AMS)? A qualitative study highlighting barriers to AMS in respiratory medicine. *Journal of Hospital Infection*, 2017. 96(4): p. 316-322.
17. Broom, J.K., A.F. Broom, E.R. Kirby, A.F. Gibson, and J.J. Post, Clinical and social barriers to antimicrobial stewardship in pulmonary medicine: A qualitative study. *American Journal of Infection Control*, 2017. 45(8): p. 911-916.
18. Bugg, W.G., MRI of appendicitis in the pregnant female. *Journal of Medical Imaging and Radiation Oncology*, 2017. 61: p. 131.
19. Bullen, P. and T. Stapleton, An update on the prostate imaging reporting and data system (PI-RADS) and use of multi-parametric magnetic resonance imaging in non-invasive assessment of prostate cancer. *Journal of Medical Imaging and Radiation Oncology*, 2017. 61: p. 202.

Journal articles and abstracts

20. Bullen, P. and T. Stapleton, Evaluating the relationship between incidental non-alcoholic fatty liver disease on CT imaging and risk of coronary artery disease. *Journal of Medical Imaging and Radiation Oncology*, 2017. 61: p. 141-142.
21. Cadilhac, D., N. Andrew, K. Joosup, B. Grabsch, M.F. Kilkenny, S. Shehata, C. Levi, S. Faux, K. Hill, G.A.O. Donnan, C. Anderson, P. Hand, R. Grimley, H. Dewey, S. Middleton, and N.A. Lannin, Are we providing patients with the best achievable care? Update from the Australian stroke clinical registry. *International Journal of Stroke*, 2017. 12(2): p. 4.
22. Cadilhac, D., M. Kilkenny, N. Andrew, H. Dewey, F. Flack, J. Boyd, Y. Chen, T. Johnston, J. Katzenellenbogen, and M. Gattellari, Pre-stroke hospital admissions for intracerebral haemorrhage: linked AuSCR registry and national hospital data. 2017.
23. Cadilhac, D., M. Kilkenny, R. Grimley, V. Sundararajan, T. Johnston, B. Grabsch, A. Thrift, N. Lannin, C. Anderson, G. Donnan, S. Middleton, and N. Andrew, Pre-Stroke hospital contacts for patients with intracerebral haemorrhage: an observational study using linked Australian Stroke Clinical Registry and hospital data from Queensland. *Eur Stroke J*, 2017. 2(1S).
24. Cadilhac, D.A., N.E. Andrew, N.A. Lannin, S. Middleton, C.R. Levi, H.M. Dewey, B. Grabsch, S. Faux, K. Hill, R. Grimley, A. Wong, A. Sabet, E. Butler, C.F. Bladin, T.R. Bates, P. Groot, H. Castley, G.A. Donnan, and C.S. Anderson, Quality of Acute Care and Long-Term Quality of Life and Survival: The Australian Stroke Clinical Registry. *Stroke*, 2017. 48(4): p. 1026-1032.
25. Cadilhac, D.A., N.E. Andrew, E. Stroil Salama, K. Hill, S. Middleton, E. Horton, I. Meade, S. Kuhle, M.R. Nelson, R. Grimley. Australian Stroke Clinical Registry, Improving discharge care: the potential of a new organisational intervention to improve discharge after hospitalisation for acute stroke, a controlled before-after pilot study. *BMJ Open*, 2017. 7(8): p. e016010.
26. Cadilhac, D.A., M.F. Kilkenny, C.R. Levi, N.A. Lannin, A.G. Thrift, J. Kim, B. Grabsch, L. Churilov, H.M. Dewey, K. Hill, S.G. Faux, R. Grimley, H. Castley, P.J. Hand, A. Wong, G.K. Herkes, M. Gill, D. Crompton, S. Middleton, and G.A. Donnan, Risk-adjusted hospital mortality rates for stroke: evidence from the Australian Stroke Clinical Registry (AuSCR). *Medical Journal of Australia*, 2017. 206(8): p. 345-350.
27. Campbell, V.K., C.M. Anstey, R.P. Gately, D.C. Comeau, C.J. Clark, E.P. Noble, K. Mahadevan, P.R. Hollett, A.J. Pollock, S.T. Hall, D.R. Jones, D. Burg, and N.A. Gray, Urine and serum midkine levels in an Australian chronic kidney disease clinic population: An observational study. *BMJ Open*, 2017. 7(9).
28. Carlton, E., J. Kendall, A. Khattab, and K. Greaves, Low concentrations of high-sensitivity troponin T at presentation to the emergency department: To the editor. *Clinical Chemistry*, 2017. 63(1): p. 431-432.
29. Chapman, A.R., K.K. Lee, D.A. McAllister, L. Cullen, J.H. Greenslade, W. Parsonage, A. Worster, P.A. Kavsak, S. Blankenberg, J. Neumann, N.A. Söerensen, D. Westermann, M.M. Buijs, G.J.E. Verdel, J.W. Pickering, M.P. Than, R. Twerenbold, P. Badertscher, Z. Sabti, C. Mueller, A. Anand, P. Adamson, F.E. Strachan, A. Ferry, D. Sandeman, A. Gray, R. Body, B. Keevil, E. Carlton, K. Greaves, F.K. Korley, T.S. Metkus, Y. Sandoval, F.S. Apple, D.E. Newby, A.S.V. Shah, and N.L. Mills, Association of high-sensitivity cardiac troponin I concentration with cardiac outcomes in patients with suspected acute coronary syndrome. *JAMA - Journal of the American Medical Association*, 2017. 318(19): p. 1913-1924.
30. Chapman, C., N. Andrew, P. Morgan, M. Kilkenny, R. Grimley, V. Sundararajan, T. Purvis, T. Johnston, and D. Cadilhac, Factors associated with development of a chest infection within 30 Days of acute stroke. 2017.
31. Chu, K.H., T.E. Howell, G. Keijzers, J.S. Furyk, R.M. Eley, F.B. Kinnear, O. Thom, I. Mahmoud, and A.F.T. Brown, Acute Headache Presentations to the Emergency Department: A Statewide Cross-sectional Study. *Academic Emergency Medicine*, 2017. 24(1): p. 53-62.
32. Coates, C., M. McKnoulty, and B. Lam, Umbilical cord hypocoiling and late intrauterine fetal death: A case report and review of literature. *Australian and New Zealand Journal of Obstetrics and Gynaecology*, 2017. 57: p. 37.
33. Cooper, S., D. Grieve, and M. Donovan, Outcomes of percutaneous cholecystostomy and predictors of subsequent cholecystectomy. *ANZ Journal of Surgery*, 2017.

Journal articles and abstracts

34. Cooper, S., D. Grieve, and M. Donovan, Cholecystostomy tube outcomes: A radiological perspective. *Journal of Medical Imaging and Radiation Oncology*, 2017. 61: p. 38.
35. Copertino, N.J. and D. Grieve, Cholecystitis in situs inversus totalis. *ANZ Journal Of Surgery*, 2017.
36. Corley, A., M. Edwards, A.J. Spooner, K.R. Dunster, C. Anstey, and J.F. Fraser, High-flow oxygen via tracheostomy improves oxygenation in patients weaning from mechanical ventilation: a randomised crossover study. *Intensive Care Medicine*, 2017. 43(3): p. 465-467.
37. Craig, L.E., L. Churilov, L. Olenko, D.A. Cadilhac, R. Grimley, S. Dale, C. Martinez-Garduno, E. McInnes, J. Considine, and J.M. Grimshaw, Testing a systematic approach to identify and prioritise barriers to successful implementation of a complex healthcare intervention. *BMC Medical Research Methodology*, 2017. 17(1): p. 24.
38. Craig, L.E., N. Taylor, R. Grimley, D.A. Cadilhac, E. McInnes, R. Phillips, S. Dale, D. O'Connor, C. Levi, M. Fitzgerald, J. Considine, J.M. Grimshaw, R. Gerraty, N.W. Cheung, J. Ward, and S. Middleton, Development of a theory-informed implementation intervention to improve the triage, treatment and transfer of stroke patients in emergency departments using the Theoretical Domains Framework (TDF): the T³ Trial. *Implementation Science*, 2017. 12(1): p. 88.
39. Davies, T., S. Wythe, J. O'Beirne, D. Martin, and E. Gilbert-Kawai, Review article: the role of the microcirculation in liver cirrhosis. *Alimentary Pharmacology and Therapeutics*, 2017. 46(9): p. 825-835.
40. Davison, M., F.B. Kinnear, and P. Fulbrook, Evaluation of a multiple-encounter in situ simulation for orientation of staff to a new paediatric emergency service: a single-group pretest/post-test study. *BMJ Simulation & Technology Enhanced Learning*, 2017. 3(4): p. 149-153.
41. Davison, M., M. Watson, L. Wockner, and F. Kinnear, Paediatric high-flow nasal cannula therapy in children with bronchiolitis: A retrospective safety and efficacy study in a non-tertiary environment. *Emergency Medicine Australasia*, 2017. 29(2): p. 198-203.
42. Deen, J. and D. Burdon-Jones, Severe, malignant acanthosis nigricans associated with adenocarcinoma of the endometrium. *Australasian Journal of Dermatology*, 2017. 58: p. 51.
43. Deen, J. and J. Muir, Extrafacial granuloma faciale. *Australasian Journal of Dermatology*, 2017. 58: p. 51.
44. Dionigi, E., M. Garcovich, M. Borzio, G. Leandro, A. Majumdar, A. Tsami, V. Arvaniti, D. Roccarina, M. Pinzani, A.K. Burroughs, J. O'Beirne, and E.A. Tsochatzis, Bacterial Infections Change Natural History of Cirrhosis Irrespective of Liver Disease Severity. *The American Journal Of Gastroenterology*, 2017. 112(4): p. 588-596.
45. Doan, E., P. Moodaley, and P. Leschke, The effectiveness of microwave ablation in the treatment of liver tumours and correlation of the achieved ablation zone with the manufacturer's expected ablation zone. *Journal of Medical Imaging and Radiation Oncology*, 2017. 61: p. 146.
46. Droney, L., D. Gillis, and R. Wong, New immunoassays for anti-HMG-CoA reductase antibodies may lead to incorrect diagnosis in inflammatory myositis. *Pathology*, 2017. 49(6): p. 638-639.
47. Edmonds, M.J., J. Forbes, S. Mackenzie, and L. Brichko, The path to becoming an emergency physician: An overview of Australasian College for Emergency Medicine emergency department training options. *Emergency Medicine Australasia*, 2017. 29(2): p. 233-235.
48. El Haddad, M., L. Moxham, and M. Broadbent, Graduate nurse practice readiness: A conceptual understanding of an age old debate. *Collegian*, 2017. 24(4): p. 391-396.
49. Erne, D., K. Rhodes, M. Bartlett, A. Chong, and S. Wahj, Improving quantitation of left ventricular ejection fraction in a tertiary echocardiography lab-merging guidelines with practice. *Heart Lung and Circulation*, 2017. 26: p. S264.
50. Fadaee, S.B., K.S. Beetham, E.J. Howden, T. Stanton, N.M. Isbel, and J.S. Coombes, Oxidative stress is associated with decreased heart rate variability in patients with chronic kidney disease. *Redox Report: Communications In Free Radical Research*, 2017. 22(5): p. 197-204.
51. Faithfull-Byrne, A., L. Thompson, K.W. Schafer, M. Elks, J. Jaspers, A. Welch, M. Williamson, W. Cross, and C. Moss, Clinical coaches in nursing and midwifery practice: Facilitating point of care workplace learning and development. *Collegian*, 2017. 24(4): p. 403-410.

Journal articles and abstracts

52. Faithfull-Byrne, A., L. Thompson, T. Welch, M. Williamson, K. Schafer, and C. Hallinan, Back to the future: A practice led transition program from Assistant in Nursing to Enrolled Nurse. *Nurse education in practice*, 2017. 22: p. 83-88.
53. Fanning, J.P., D.L. Walters, A.J. Wesley, C. Anstey, S. Huth, J. Bellapart, C. Collard, I.L. Rapchuk, S. Natani, M. Savage, and J.F. Fraser, Intraoperative Cerebral Perfusion Disturbances During Transcatheter Aortic Valve Replacement. *Annals of Thoracic Surgery*, 2017. 104(5): p. 1564-1568.
54. Fielder, M., P. Jenvey, and A. Coulthard, Causes, pathology, radiological findings and clinical consequences of superficial siderosis. *Journal of Medical Imaging and Radiation Oncology*, 2017. 61: p. 210.
55. Fleming, S., D.M. Ong, K. Jackson, S. Avery, P. Mollee, P. Marlton, G. Kennedy, and A.H. Wei, Partial response after induction chemotherapy has clinical relevance in acute myeloid leukaemia. *British Journal of Haematology*, 2017(2): p. 328.
56. Forbes, J. and L. Brichko, Selection into Emergency Medicine fellowship training: Is it a fair game? *EMA - Emergency Medicine Australasia*, 2017. 29(4): p. 456-458.
57. Fraser-Kirk, K., Laryngopharyngeal reflux: A confounding cause of aerodigestive dysfunction. *Australian Family Physician*, 2017. 46(1): p. 34-39.
58. Gangadharan, S., S. Chen, E. Cross, T. Chamberlain, and A. Tampiyappa, Prevalence and severity of non-motor symptoms (NMS) of Parkinson's disease (PD) among patients attending a PD rehabilitation service in rural Queensland, Australia. *Journal of the Neurological Sciences*, 2017. 381: p. 226-227.
59. Ghosh, S., T.L. Bui, C.E. Skinner, S. Tan, and G. Hopkins, A 12-Month Review of Revisional Single Anastomosis Gastric Bypass for Complicated Laparoscopic Adjustable Gastric Banding for Body Mass Index over 35. *Obesity Surgery*, 2017. 27(11): p. 3048-3054.
60. Goh, I.Y., A.L. Sandstrom, T. Stapleton, R. Aseervatham, and D.A. Grieve, The Duari hernia and recognition of the femoral vein compression sign. *BMJ Case Reports*, 2017.
61. Goh, I.Y., S. Saric, P. Leschke, M. McFarlane, and P.K. Jha, Thromboembolism in active ulcerative colitis. *BMJ Case Reports*, 2017. 2017: p. 1.
62. Govindasamy, J., H. Haqqani, and R. O'Rourke, CTCA vs coronary catheter angiography in the diagnosis of coronary artery sarcoidosis: A pictorial case report. *Journal of Medical Imaging and Radiation Oncology*, 2017. 61: p. 213-214.
63. Green, A. and B. Field, A rare case of uterine rupture in a primigravida. *Australian and New Zealand Journal of Obstetrics and Gynaecology*, 2017. 57: p. 45.
64. Grimley, R., I. Rosbergen, S. Kuys, L. Gustaffson, E. Horton, T. Green, S. Fitzhenry, A. Longmire, M. Smith, B. Hughes, R. Wilding, C. Brickhill, and G. Cadigan, Determinants of rehabilitation assessment and referral following acute stroke. Early results from Building Efficient and Effective Pathways to and through Rehabilitation after Stroke (BEEPRS). *International Journal of Stroke*, 2017. 12(3): p. 25-26.
65. Gunawan, B. and M. Azer, Incidence and management of immune-related adverse events at a regional hospital-A review of 4 years of immunotherapy. *Asia-Pacific Journal of Clinical Oncology*, 2017. 13: p. 60.
66. Gunawan, B., B.A. Chan, and M. Azer, Safety and viability of immunotherapy delivery at a regional queensland centre. *Asia-Pacific Journal of Clinical Oncology*, 2017. 13: p. 191.
67. Hamilton, S. and J. Forbes, Mentoring in emergency medicine: The intersection of professional and personal development. *EMA - Emergency Medicine Australasia*, 2017. 29(3): p. 348-350.
68. Haran, C., A. Kiosoglous, and R. Akhbar, A novel method for eliminating missed follow up: 'The urology histology clinic program'. *BJU International*, 2017. 119: p. 53-54.
69. Harris, I.A., J.M. Naylor, A. Lawson, R. Buchbinder, R. Ivers, Z. Balogh, P. Smith, R. Mittal, W. Xuan, K. Howard, A. Vafa, P. Yates, B. Rieger, G. Smith, I. Elkinson, W. Kim, M. Chehade, J. Sungaran, K. Latendresse, J. Wong, S. Viswanathan, M. Richardson, K. Shrestha, H. Drobetz, P. Tran, J. Loveridge, R. Page, R. Hau, R. Bingham, J. Mulford, and I. Incoll, A combined randomised and observational study of surgery for fractures in the distal radius in the elderly (CROSSFIRE)-a study protocol. *BMJ Open*, 2017. 7(6): p. e016100-e016100.

Journal articles and abstracts

70. Henwood, T., B. Hassan, P. Swinton, H. Senior, and J. Keogh, Consequences of sarcopenia among nursing home residents at long-term follow-up. *Geriatric Nursing*, 2017. 38(5): p. 406-411.
71. Hickey, A., J. Adsett, J.J. Atherton, C. Denaro, T. Nunan, and R. Peters, A state-wide approach to multidisciplinary care: Heart failure evaluation and reporting of outcomes (HERO). *European Journal of Heart Failure*, 2017. 19: p. 226.
72. Holland, D., T. Marwick, B. Haluska, K. Greaves, J. Coombes, J. Prins, and T. Stanton, Subclinical left ventricular dysfunction and glycaemic control over long-term follow-up in individuals with type 2 diabetes mellitus: A prospective follow-up study. *Heart Lung and Circulation*, 2017. 26: p. S148.
73. Hsing, Y.E. and J. Walker, Bilateral interstitial keratitis with anterior stromal infiltrates associated with reactive arthritis. *BMJ Case Reports*, 2017. 06: p. 06.
74. Indja, B., M. Seco, R. Seemark, J. Kaplan, P.G. Bannon, S.M. Grieve, and M.P. Vallely, Neurocognitive and Psychiatric Issues Post Cardiac Surgery. *Heart Lung and Circulation*, 2017. 26(8): p. 779-785.
75. Ireland, L. and A. Baker, Transdisciplinary practice among allied health and nursing in a co-located stroke unit -A pilot study design. *International Journal of Stroke*, 2017. 12(2): p. 27-28.
76. Jardine, M.J., L. Zuo, N.A. Gray, J.R. De Zoysa, C.T. Chan, M.P. Gallagher, H. Monaghan, S.M. Grieve, R. Puranik, H. Lin, J.M. Eris, L. Zhang, J. Xu, K. Howard, S. Lo, A. Cass, and V. Perkovic, A trial of extending hemodialysis hours and quality of life. *Journal of the American Society of Nephrology*, 2017. 28(6): p. 1898-1911.
77. Johnston, A.N.B., B. Weeks, M.-A. Shuker, E. Coyne, H. Niall, M. Mitchell, and D. Massey, Nursing Students' Perceptions of the Objective Structured Clinical Examination: An Integrative Review. *Clinical Simulation in Nursing*, 2017. 13(3): p. 127-142.
78. Johnston, C.M., M. Wallis, F.I. Oprescu, and M. Gray, Methodological considerations related to nurse researchers using their own experience of a phenomenon within phenomenology. *Journal of advanced nursing*, 2017. 73(3): p. 574-584.
79. Joshi, K., V. Campbell, M. Landy, C.M. Anstey, and R. Gooch, The effect of Rapid Response System revision on standard and specific intensive care unit outcomes in a regional hospital. *Anaesthesia And Intensive Care*, 2017. 45(3): p. 369-374.
80. Kalafateli, M., K. Mantzoukis, Y. Choi Yau, A.O. Mohammad, S. Arora, S. Rodrigues, M. de Vos, K. Papadimitriou, D. Thorburn, J. O'Beirne, D. Patch, M. Pinzani, M.Y. Morgan, B. Agarwal, D. Yu, A.K. Burroughs, and E.A. Tsochatzis, Malnutrition and sarcopenia predict post-liver transplantation outcomes independently of the Model for End-stage Liver Disease score. *Journal Of Cachexia, Sarcopenia And Muscle*, 2017. 8(1): p. 113-121.
81. Kalafateli, M., F. Wickham, M. Burniston, E. Cholongitas, E. Theocharidou, M. Garcovich, J. O'Beirne, R. Westbrook, G. Leandro, A.K. Burroughs, and E.A. Tsochatzis, Development and validation of a mathematical equation to estimate glomerular filtration rate in cirrhosis: The royal free hospital cirrhosis glomerular filtration rate. *Hepatology (Baltimore, Md.)*, 2017. 65(2): p. 582-591.
82. Kearney, L., M. Kynn, A. Craswell, and R. Reed, The relationship between midwife-led group-based versus conventional antenatal care and mode of birth: A matched cohort study. *BMC Pregnancy and Childbirth*, 2017. 17(1).
83. Kiemann, C., L. Johnston, C. Topfer, and P. Ireland, 'Travels' impairments predict gross motor function and participation of school-aged children with achondroplasia. *Developmental Medicine and Child Neurology*, 2017. 59: p. 86.
84. Kilkenny, M., N. Andrew, R. Grimley, V. Sundararajan, T. Johnston, N. Lannin, L. Churilov, S. Middleton, C. Anderson, and D. Cadilhac, Does linking the Australian stroke clinical registry with admissions data provide a better explanation of variability in stroke risk-adjusted mortality rates? *European Stroke Journal*, 2017. 2(1): p. 442.
85. Kilkenny, M., V. Sundararajan, C. Levi, A. Thrift, L. Churilov, N. Andrew, P. Anderson, R. Grimley, J. Kim, and T. Johnston, Stroke severity is an important covariate to explain variability in stroke risk-adjusted mortality rates: linked AuSCR registry and national hospital data. 2017.

Journal articles and abstracts

86. Kim, J., N. Lannin, M. Kilkenny, C. Anderson, A. Thrift, K. Moss, H. Dewey, R. Grimley, K. Bagot, and J. Bernhardt, Health-related quality of life of working-age adults in the Australian Stroke Clinical Registry. 2017.
87. Koplín, A. and A. Green, DHEA-can it turn back time? Australian and New Zealand Journal of Obstetrics and Gynaecology, 2017. 57: p. 50-51.
88. Koplín, A. and A. Green, Why we need to talk about sex. Australian and New Zealand Journal of Obstetrics and Gynaecology, 2017. 57: p. 51.
89. Kotwal, S., G. Talaulikar, N. Gray, K. Polkinghorne, S. McDonald, A. Cass, and M. Gallagher, Reporting feasibility of the use of a realtime data reporting tool to improve outcomes of haemodialysis catheter complications across Australia (REDUCTION). Nephrology, 2017. 22: p. 83.
90. Krishnasamy, R. and E. Pedagogos, Should nephrologists consider vascular calcification screening? Nephrology, 2017. 22: p. 31.
91. Krishnasamy, R., S.J. Tan, C.M. Hawley, D.W. Johnson, T. Stanton, K. Lee, D.W. Mudge, S. Campbell, G.J. Elder, N.D. Toussaint, and N.M. Isbel, Progression of arterial stiffness is associated with changes in bone mineral markers in advanced CKD. BMC Nephrol, 2017. 18(1): p. 281.
92. Krishnasamy, R., C. Wilkinson, C.J. Clark, C. McClure, M. Wilson, J. Bashford, and N.A. Gray, Contact precautions for colonization with multi-drug resistant organisms and haemodialysis patient quality of life and mood: A pilot case control study. Nephrology, 2017. 22: p. 82.
93. Lannan, S.A., Nursing program evaluation for Nurse Educators. Nurse Education Today, 2017. 55: p. 17-19.
94. Lannin, N.A., C.S. Anderson, J. Kim, M. Kilkenny, J. Bernhardt, C. Levi, H.M. Dewey, C. Bladin, P. Hand, H. Castley, K. Hill, S. Faux, R. Grimley, B. Grabsch, S. Middleton, G. Donnan, and D.A. Cadilhac, Treatment and Outcomes of Working Aged Adults with Stroke: Results from a National Prospective Registry. Neuroepidemiology, 2017. 49(3-4): p. 113-120.
95. Lau, K., D. Wall, C. Hamilton-Craig, and M. Johnson, Incomplete atrioventricular septal defect in a patient with new onset atrial fibrillation. Heart Lung and Circulation, 2017. 26: p. S168.
96. Le, D.P., M.K. Smith, and E.A.B. Aitken, Genetic variation in *Pythium myriotylum* based on SNP typing and development of a PCR-RFLP detection of isolates recovered from *Pythium* soft rot ginger. Letters in Applied Microbiology, 2017. 65(4): p. 319-326.
97. Marsden, E., A. Taylor, M. Wallis, A. Craswell, M. Broadbent, A. Barnett, K.H. Nguyen, J. Crilly, C. Johnston, and A. Glenwright, A structure, process and outcome evaluation of the Geriatric Emergency Department Intervention model of care: a study protocol. BMC geriatrics, 2017. 17(1): p. 76.
98. Massey, D., W. Chaboyer, and V. Anderson, What factors influence ward nurses' recognition of and response to patient deterioration? An integrative review of the literature. Nursing Open, 2017. 4(1): p. 6-23.
99. McKenzie, S.C., K. Dunster, W. Chan, M.R. Brown, D.G. Platts, G. Javorsky, C. Anstey, and S.D. Gregory, Reliability of thermodilution derived cardiac output with different operator characteristics. Journal of Clinical Monitoring and Computing, 2017: p. 1-8.
100. Morgan, T.J., C.M. Anstey, and M.B. Wolf, A head to head evaluation of 8 biochemical scanning tools for unmeasured ions. Journal of Clinical Monitoring & Computing, 2017. 31(2): p. 449-457.
101. Nam, M., A. Meneses, T. Richman, E. Woo, E. Karlsen, A. McCracken, C. Askew, C. Anstey, C. Byrne, T. Stanton, A. Russell, and K. Greaves, The Dose-Response Effect of Hyperinsulinaemic Euglycaemia Using Insulin-Dextrose Clamps on Myocardial Microvascular Function. Heart, Lung & Circulation, 2017. 26: p. S122-S122.
102. Nam, M.C.Y., E.A. Karlsen, E. Woo, N. Dayananda, K. Greaves, and T. Stanton, Flecainide overdose-induced Brugada electrocardiogram pattern. QJM, 2017. 110(9): p. 607.
103. Nam, M.C.Y., M. Wilkins, A. Harris, and N. Dayananda, Atrioventricular block masked by posteroseptal bypass tract located in coronary sinus aneurysm. Journal of Electrocardiology, 2017. 50(6): p. 978-980.
104. Nash, E.L., D. Gilroy, W. Srikusalanukul, W.P. Abhayaratna, T. Stanton, G. Mitchell, M. Stowasser, and J.E. Sharman, Facebook advertising for participant recruitment into a blood pressure clinical trial. Journal of Hypertension, 2017. 35(12): p. 2527-2531.

Journal articles and abstracts

105. Nel, K., M.C.Y. Nam, C. Anstey, C.J. Boos, E. Carlton, R. Senior, J.C. Kaski, A. Khattab, D. Shamley, C.D. Byrne, T. Stanton, and K. Greaves, Myocardial blood flow reserve is impaired in patients with aortic valve calcification and unobstructed epicardial coronary arteries. *International Journal Of Cardiology*, 2017. 248: p. 427-432.
106. Nguyen, K., M. Min, L. Holloway, D. Forstner, M. Lee, A. Fowler, and M. Jameson, Diffusion weighted imaging (DWI) for adaptive avoidance of functional parotid gland tissue in patients receiving radiotherapy (RT) for head and neck cancer. *Journal of Medical Imaging and Radiation Oncology*, 2017. 61: p. 122.
107. Obermair, A., P. Higgs, P. Forder, R. Asher, M. Janda, and V. Gebiski, The effect of hysterectomy on pelvic floor symptoms. *International Journal of Gynecological Cancer*, 2017. 27: p. 34.
108. Onali, S., F. Figorilli, and J. O'Beirne, Post operative change in albi grade predicts medium term survival in patients undergoing resection for HCC. *Gut*, 2017. 66: p. A159-A160.
109. Onali, S., M. Kalafateli, A. Majumdar, R. Westbrook, J. O'Beirne, G. Leandro, D. Patch, and E.A. Tsochatzis, Non-selective beta-blockers are not associated with increased mortality in cirrhotic patients with ascites. *Liver International: Official Journal Of The International Association For The Study Of The Liver*, 2017. 37(9): p. 1334-1344.
110. Paramsothy, S., M.A. Kamm, N.O. Kaakoush, A.J. Walsh, J. van den Bogaerde, D. Samuel, R.W.L. Leong, S. Connor, W. Ng, R. Paramsothy, W. Xuan, E. Lin, H.M. Mitchell, and T.J. Borody, Multidonor intensive faecal microbiota transplantation for active ulcerative colitis: a randomised placebo-controlled trial. *The Lancet*, 2017. 389(10075): p. 1218-1228.
111. Phan, H., D. Cadilhac, L. Blizzard, N. Lannin, A. Thrift, C. Anderson, J. Kim, R. Grimley, and S. Gall, Differences in stroke care and outcomes after stroke for women compared to men: Australian Stroke Clinical Registry (AuSCR). 2017.
112. Puckeridge, G., M. Terblanche, L. Fung, and M. Wallis, Associations between preoperative anaemia, transfusion and outcomes in older hip fracture patients. *Vox Sanguinis*, 2017. 112: p. 72.
113. Puckeridge, G., M. Terblanche, and D. Massey, The SCHHS hip fracture clinical network experience—Improving care and outcomes through an interprofessional approach. *International Journal of Orthopaedic & Trauma Nursing*, 2017. 26: p. 24-29.
114. Quah, J.X., S. Sargent, K. Nel, E. Carlton, T. Stanton, C. Anstey, and K. Greaves, Relationship between epicardial fat volume and carotid intima media thickness in patients with chest pain and unobstructed coronary arteries. *European Heart Journal Cardiovascular Imaging*, 2017. 18: p. iii413.
115. Quinn, A., L. Banney, J. Perry-Keene, and D. Weedon, Eruptive keratoacanthomas in tattoos. *Australasian Journal of Dermatology*, 2017. 58(4): p. 317-318.
116. Quinn, V.F., B. Meiser, J. Kirk, K.M. Tucker, K.J. Watts, B. Rahman, M. Peate, C. Saunders, E. Geelhoed, M. Gleeson, K. Barlow-Stewart, M. Field, M. Harris, Y.C. Antill, L. Ciccirelli, K. Crowe, M.T. Bowen, G. Mitchell, P. Gregory, L. Lipton, L. McKay, J. Senior, L. Lobb, P. Crowe, A. Matthews, G. Neil, A. Parasy, D. Thomson, J. Duffy, L. Andrews, J. Gale, J. Fox, S. Hart, C. Smythe, M. White, L. Creighton, J. D'Arcy, S. Grieve, E. Secomb, M. Henderson, J. O'Brien, C. Poliness, A. Hattam, R. Susman, O. Ung, D.I. R, K. Moore, P. Bastick, S. Inder, J. Lynch, P. Schwartz, R. Zia, C. Mak, K. Snook, A. Spillane, J. Hopper, M. Bowman, D. Cheung, S. Edirimanne, E. Edwards, E. Elder, J. French, and D. Moon, Streamlined genetic education is effective in preparing women newly diagnosed with breast cancer for decision making about treatment-focused genetic testing: A randomized controlled noninferiority trial. *Genetics in Medicine*, 2017. 19(4): p. 448-456.
117. Reynolds, A., A. Sandstrom, and P.K. Jha, Totally Endovascular Management of Popliteal Artery Occlusion and Pseudoaneurysm Formation after Total Knee Replacement. *Annals of Vascular Surgery*, 2017. 38: p. 316.e13-316.e16.
118. Roberts, M., S. Scott, P. Harris, K. Naber, F. Wagenlehner, and S. Doi, Fosfomycin prophylaxis for transrectal prostate biopsy reduces infectious complications: A systematic review and meta-analysis. *Asia-Pacific Journal of Clinical Oncology*, 2017. 13: p. 58-59.

Journal articles and abstracts

119. Roberts, M.A., D. Darssan, S.V. Badve, R.P. Carroll, M.A. Fahim, B.A. Haluska, C.M. Hawley, N.M. Isbel, M.R. Marshall, E.M. Pascoe, E. Pedagogos, H.L. Pilmore, P. Snelling, T. Stanton, K.S. Tan, A.M. Tonkin, L.A. Vergara, and F.L. Ierino, Carvedilol and Cardiac Biomarkers in Dialysis Patients: Secondary Analysis of a Randomized Controlled Trial. *Kidney Blood Press Res*, 2017. 42(6): p. 1033-1044.
120. Robertson, J.A., R.M. Kimble, K. Stockton, and R. Sekar, Antenatal ultrasound features in fetuses with gastroschisis and its prediction in neonatal outcome. *Australian and New Zealand Journal of Obstetrics and Gynaecology*, 2017. 57(1): p. 52-56.
121. Robertson, S.T., I.C.M. Rosbergen, R.S. Grimley, and C. Anstey, Acute stroke patients not meeting their nutrition requirements: Investigating the effect of an enriched environment on nutrition. *International Journal of Stroke*, 2017. 12(3): p. 12.
122. Romses, K., T. Stephens, R. Tran, B. Crocker, and V. Lam, Vancouver Food Asset Map helps users find food easily...Canadian Foundation for Dietetic Research: Dietetic Research Event: June 8 and 9, 2017, St John's, Newfoundland. *Canadian Journal of Dietetic Practice & Research*, 2017. 78(3): p. 163-163.
123. Rosbergen, I., S. Fitzhenry, R.S. Grimley, S.G. Brauer, and K.S. Hayward, Staff perspective of working in an enriched environment embedded in the Acute Stroke Unit. *International Journal of Stroke*, 2017. 12(3): p. 14.
124. Rosbergen, I., R.S. Grimley, K.S. Hayward, K.C. Walker, D. Rowley, A.M. Campbell, S. McGufficke, S.T. Robertson, J. Trinder, H. Janssen, and S.G. Brauer, Are the effects of an enriched environment on patient activity sustained over time in an acute stroke unit? *International Journal of Stroke*, 2017. 12(3): p. 13-14.
125. Rosbergen, I.C., R.S. Grimley, K.S. Hayward, K.C. Walker, D. Rowley, A.M. Campbell, S. McGufficke, S.T. Robertson, J. Trinder, H. Janssen, and S.G. Brauer, Embedding an enriched environment in an acute stroke unit increases activity in people with stroke: a controlled before-after pilot study. *Clinical Rehabilitation*, 2017. 31(11): p. 1516-1528.
126. Rosbergen, I.C.M., S.G. Brauer, S. Fitzhenry, R.S. Grimley, and K.S. Hayward, Qualitative investigation of the perceptions and experiences of nursing and allied health professionals involved in the implementation of an enriched environment in an Australian acute stroke unit. *BMJ Open*, 2017. 7(12).
127. Rosbergen, I.C.M., S.G. Brauer, S. Fitzhenry, R.S. Grimley, and K.S. Hayward, Qualitative investigation of the perceptions and experiences of nursing and allied health professionals involved in the implementation of an enriched environment in an Australian acute stroke unit. *Bmj Open*, 2017. 7(12): p. 11.
128. Roy, A. and A. Kothari, Postcoital injury-a case series and systematic review. *Bjog-an International Journal of Obstetrics and Gynaecology*, 2017. 124: p. 61-61.
129. Ruderman, I., S. Holt, T. Hewitson, E. Smith, N. Gray, R. Krishnasamy, C. Hawley, V. Oliver, G. Talaulikar, G. Kirkland, S. Maslen, and N. Toussaint, Changes in bone and mineral metabolism markers after cessation of cinacalcet in dialysis patients with secondary hyperparathyroidism. *Nephrology*, 2017. 22: p. 39.
130. Rumley, C.N., M.T. Lee, L. Holloway, R. Rai, M. Min, D. Forstner, A. Fowler, and G. Liney, Multiparametric magnetic resonance imaging in mucosal primary head and neck cancer: A prospective imaging biomarker study. *BMC Cancer*, 2017. 17(1).
131. Rumley, C.N., M.T. Lee, L. Holloway, R. Rai, M. Min, D. Forstner, A. Fowler, and G. Liney, Serial multiparametric MRI in head and neck cancer treated with radical radiotherapy. *Journal of Medical Imaging and Radiation Oncology*, 2017. 61: p. 178-179.
132. Ryan, S., D. Grieve, and D. Beaudequin, Regional management of traumatic brain injury patients and the recognition of need for inter-hospital transfer. *ANZ Journal of Surgery*, 2017. 87(S1): p. 136.
133. Sandstrom, A. and D.A. Grieve, Hyperbilirubinaemia: its utility in non-perforated appendicitis. *ANZ Journal of Surgery*, 2017. 87(7-8): p. 587-590.
134. Sandstrom, A., A. Reynolds, and P. Jha, Popliteal Vein Aneurysm: A Rare Cause of Pulmonary Emboli. *Annals of Vascular Surgery*, 2017. 38: p. 315.e15-315.e17.
135. Scolaro, R.J., H.M. Crilly, E.J. Maycock, P.T. McAleer, K.A. Nicholls, M.A. Rose, R.I.H. The, and R. The, Australian and New Zealand Anaesthetic Allergy Group Perioperative Anaphylaxis Investigation Guidelines. *Anaesthesia & Intensive Care*, 2017. 45(5): p. 543-555.

Journal articles and abstracts

136. Scott, S., N. Papa, M. Roberts, M. Perera, S. Ranasinghe, D. Bolton, N. Lawrentschuk, and J. Yaxley, Pelvic lymphadenectomy and radical prostatectomy in the elderly: inverse trends observed in Australian population data. *Asia-Pacific Journal of Clinical Oncology*, 2017. 13: p. 59-60.
137. Scott, S.E., T. Gianduzzo, G. Coughlin, B. Kua, R. Parkinson, H. Samaratinga, and J. Yaxley, Pirads 3 lesions characterised by mp-mri of the prostate correspond with an intermediate to high risk of clinically significant prostate cancer on whole specimen histopathology-a retrospective review of 42 cases. *Asia-Pacific Journal of Clinical Oncology*, 2017. 13: p. 59.
138. Scott, T. and N. Gray, Man of stone. *Postgraduate Medical Journal*, 2017. 93(1101): p. 438.
139. Scott, T. and N. Gray, Use of a clinical scoring tool in predicting arteriovenous fistulas likely to fail to mature. *Nephrology*, 2017. 22: p. 83.
140. Sharman, J.E., T. Stanton, C.M. Reid, A. Keech, P. Roberts-Thomson, S. Stewart, R. Greenough, M. Stowasser, and W.P. Abhayaratna, Targeted LOWering of Central Blood Pressure in patients with hypertension: Baseline recruitment, rationale and design of a randomized controlled trial (The LOW CBP study). *Contemporary Clinical Trials*, 2017. 62: p. 37-42.
141. Shipstone, R., J. Young, and L. Kearney, New Frameworks for Understanding Sudden Unexpected Deaths in Infancy (SUDI) in Socially Vulnerable Families. *Journal of Pediatric Nursing*, 2017. 37: p. 35-41.
142. Simon, G., A. Craswell, O. Thom, and L. Fung, Who is using blood and when-impact of the ageing population on demand for and urgency of transfusion. *Vox Sanguinis*, 2017. 112: p. 87-88.
143. Simon, G., A. Craswell, O. Thom, and L. Fung, Recent evidence favours specific guidance on transfusion strategies in the older population. *Vox Sanguinis*, 2017. 112: p. 261-262.
144. Simon, G.I., A. Craswell, O. Thom, and Y.L. Fung, Outcomes of restrictive versus liberal transfusion strategies in older adults from nine randomised controlled trials: a systematic review and meta-analysis. *The Lancet Haematology*, 2017. 4(10): p. e465-e474.
145. Simon, G.I., A. Craswell, O. Thom, and Y.L. Fung, Authors' reply to comment Blood transfusion strategies in elderly patients. *The Lancet Haematology*, 2017. 4(11): p. e508.
146. Smith, P.J., A.M. Clavarino, J.E. Long, and K.J. Steadman, The Use of a Brochure to Enable CAM-with-Chemotherapy Patient Education. *Journal of Cancer Education*, 2017. 32(4): p. 814-819.
147. Stanton, T. and F.G. Dunn, Hypertension, Left Ventricular Hypertrophy, and Myocardial Ischemia. *Medical Clinics of North America*, 2017. 101(1): p. 29-41.
148. Stevenson, P., E. McMeniman, J. Wu, and P. Soyer, Obtaining patients' informed consent for clinical photographs: An audit of dermatology registrars' practices at a tertiary hospital. *Australasian Journal of Dermatology*, 2017. 58: p. 87-88.
149. Stevenson, P. and K. Rodins, Multiple pilomatrixomas in a paediatric patient leading to a diagnosis of familial adenomatous polyposis. *Australasian Journal of Dermatology*, 2017. 58: p. 87.
150. Stevenson, P. and C. Sander, Treating severe plaque psoriasis in a paediatric patient with etanercept. *Australasian Journal of Dermatology*, 2017. 58: p. 88.
151. Stewart, C., E. Power, A. McCluskey, L. Ada, and S. Kuys, Barriers and enablers to increasing the amount of practice completed by stroke survivors during inpatient rehabilitation. *International Journal of Stroke*, 2017. 12(2): p. 14-15.
152. Strahan, A. and R. Aseervatham, Laparoscopic adjustable gastric band tubing erosion into large bowel. *ANZ journal of surgery*, 2017. 87(7-8): p. 631-632.
153. Sutt, A.L., C.M. Anstey, L.R. Caruana, P.L. Cornwell, and J.F. Fraser, Ventilation distribution and lung recruitment with speaking valve use in tracheostomised patient weaning from mechanical ventilation in intensive care. *Journal of Critical Care*, 2017. 40: p. 164-170.
154. Swayne, A., L. Tjoa, R. Wong, D. Gillis, D. Schweitzer, B. Tsang, A. McNabb, S. Broadley, and S. Blum, The many faces of anti-glycine receptor related disease: A case series and literature review. *Journal of Neurology, Neurosurgery and Psychiatry*, 2017. 88(5): p. e6.
155. Swinkels, S., Trainee fatigue – time for a culture change? *Anaesthesia*, 2017. 72(12): p. 1562-1563.

Journal articles and abstracts

156. Tallon, M.M., G.E. Kendall, L. Priddis, F. Newall, and J. Young, Barriers to Addressing Social Determinants of Health in Pediatric Nursing Practice: An Integrative Review. *Journal of Pediatric Nursing*, 2017. 37: p. 51-56.
157. Teasdale, S.L., W.J. Inder, M. Stowasser, and T. Stanton, Hyperdynamic Right Heart Function in Graves' Hyperthyroidism Measured by Echocardiography Normalises on Restoration of Euthyroidism. *Heart Lung and Circulation*, 2017. 26(6): p. 580-585.
158. Teasdale, S.L.M.P.F., W.J.M.M.D.F. Inder, M.M.P.F. Stowasser, and T.M.P.F.F. Stanton, Hyperdynamic Right Heart Function in Graves' Hyperthyroidism Measured by Echocardiography Normalises on Restoration of Euthyroidism. *Heart, Lung and Circulation*, 2017. 26(6): p. 580-585.
159. Tewksbury, R., A. Choong, A. Al-Timimi, A. Kruger, and S. Quinn, Unique solution to the difficult problem of an aorto-duodenal fistula in a regional centre. *ANZ Journal of Surgery*, 2017. 87(4): p. 308-310.
160. Thayabaranathan, T., N. Andrew, M. Kilkenny, R. Stolwyk, A. Thrift, R. Grimley, T. Johnston, V. Sundararajan, N. Lannin, and D. Cadilhac, Is self-reported anxiety or depression between 90-180 days post-stroke associated with patient factors or quality of acute care received? *International Journal of Stroke*, 2017. 12(3): p. 23.
161. Torr, S., Establishing a nurse-led continence clinic in outpatients. *Australian & New Zealand Continence Journal*, 2017. 23(2): p. 50-51.
162. Tsang, B.K.T., A.S.K. Chen, and M. Paine, Acute evaluation of the acute vestibular syndrome: differentiating posterior circulation stroke from acute peripheral vestibulopathies. *Internal Medicine Journal*, 2017. 47(12): p. 1352-1360.
163. White, L., B. Kay, S. Higgins, S. Kaye, A. Sloss, N. Weston, J. O'Beirne, and J.D. Mitchell, Maximising access to hcv treatment-the sunshine coast experience. *Gut*, 2017. 66: p. A102.
164. White, L.S. and S. Kaye, Concomitant arterial and venous thromboembolism in ulcerative colitis. *The Lancet. Gastroenterology & Hepatology*, 2017. 2(9): p. 690.
165. Wilson, R., H. Kuan Kok, D. Fortescue-Webb, O. Doody, O. Buckley, and W.C. Torreggiani, Prevalence and seasonal variation of incidental MRI paranasal inflammatory changes in an asymptomatic Irish population. *Irish Medical Journal*, 2017. 110(9): p. 641.
166. Windegger, T., C. Lambooy, J. English, H. Weston, K. Morwood, and L. Fung, Comparing the number of antibiotic treated infections of primary and secondary immunodeficiency disease patients on immunoglobulin replacement therapy-preliminary findings in an Australian cohort. *Vox Sanguinis*, 2017. 112(S1): p. 258.
167. Windegger, T.M., C.A. Lambooy, L. Hollis, K. Morwood, H. Weston, and Y.L. Fung, Subcutaneous Immunoglobulin Therapy for Hypogammaglobulinemia Secondary to Malignancy or Related Drug Therapy. *Transfusion Medicine Reviews*, 2017. 31(1): p. 45-50.
168. Wright, E.J., Exercising patient-centredness in prehabilitation programs. *European Journal of Surgical Oncology*, 2017. 43(2): p. 509-510.
169. Yeung, D., A. Grigg, N. Shanmuganathan, I. Cunningham, J. Shortt, P. Rowling, J. Reynolds, R. Cushion, R. Harrap, D.M. Ross, D. Kipp, A.K. Mills, C.K. Arthur, A.P. Schwarzer, K. Jackson, N. Viiala, R. Weinkove, A.S.M. Yong, S. Branford, and T.P. Hughes, Nilotinib in combination with pegylated interferon Alfa-2b for CP-CML leads to high molecular response rates: Interim results of the pinnacle study. *Blood*, 2017. 130.
170. Zhang, L., S.V. Badve, E.M. Pascoe, E. Beller, A. Cass, C. Clark, J. de Zoysa, N.M. Isbel, X. Liu, S. McTaggart, A.T. Morrish, G. Playford, A. Scaria, P. Snelling, L.A. Vergara, C.M. Hawley, and D.W. Johnson, Representativeness of Honeypot Trial Participants to Australasian PD Patients. *Peritoneal Dialysis International*, 2017. 37(5): p. 516-522.

References

1. Makkar S, Haynes A, Williamson A, Redman S. Organisational capacity and its relationship to research use in six Australian health policy agencies. 2018. PLoS ONE 13(3): e0192528. <https://doi.org/10.1371/journal.pone.0192528>
2. Wulf-Andersen T, Mogensen K, Hjort-Madsen P. Researching with undergraduate students: Exploring the learning potentials of undergraduate students and researchers collaborating in knowledge production. 2013. Journal of Research Practice 9(2) ISSN: 1712-851X
3. Queensland Health. Sunshine Coast Hospital and Health Service (SCHHS) Research – Publications and Resources, Research Strategic Plan 2016-2021 [Internet]. 2016 Feb 25 [cited 2018 Oct 8]. Available from: https://www.health.qld.gov.au/__data/assets/pdf_file/0024/163806/research-strat-plan-201621.pdf
4. Queensland Health. Sunshine Coast Hospital and Health Service (SCHHS) Research – Publications and Resources, Research Themes 2016 -2021 [Internet]. 2016 Feb 25 [cited 2018 Oct 8]. Available from: https://www.health.qld.gov.au/__data/assets/pdf_file/0023/163157/research-themes-201621.pdf

